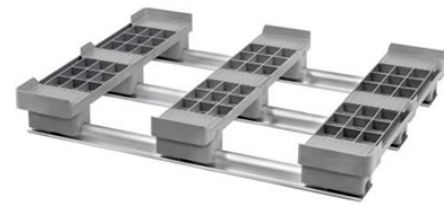


# CPPSHUTTLE/ACM

## 48x40 (Standard) Plastic Pallet Shuttle



### Technical Data

Dimensions 47.2x31.5x5.5 inches (1200x800x140 mm)  
Weight 33.0 lbs

#### Load Capacities

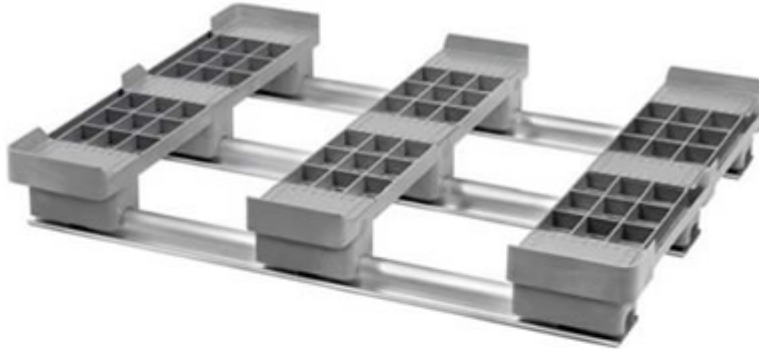
Static 22000 lbs  
Dynamic 4400 lbs  
Racking 2800 lbs

Entry 2-way  
Truckload Qty --  
Stack TL --

TL (truckload) quantities are approximate and may vary by transport equipment or other factors.

### Handling Data

<b>Nestable</b> No	<b>Reusability</b> One-Way	<b>ISPM-15 Exempt</b> Yes
<b>Stackable</b> --	<b>Destination</b> Captive & Export	<b>Food Grade</b> No
<b>Rackable</b> Yes	<b>Airfreight</b> Yes	<b>Pharmaceutical</b> Yes



### Materials and Colors

**Condition**  
New

**Material**  
ACM (Recycled)

**Color**  
Black

### Deck Specs

**Top Deck**  
Open

**Bottom Deck**  
3 Runner - Unidirectional Long Side

### Features

Storage and transport solution for automated high-racking systems.

- Designed for use in ASRS systems
- Impervious to acids, fats, solvents and odors
- Resists water absorption & bacteria growth
- Inert to infestation, mold and mildew
- Consistently dimensionally accurate
- Exempt from ISPM 15 shipping regulations

**Nelson**<sup>TM</sup>

The Nelson Company  
(443) 649-5294

[plastic@NelsonCompany.com](mailto:plastic@NelsonCompany.com)

[www.NelsonCompany.com](http://www.NelsonCompany.com)

[www.NelsonTechCenter.com](http://www.NelsonTechCenter.com)