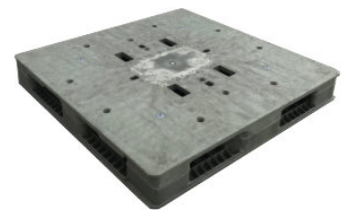


UP-1111-RV-140mm60lbs

43x43 (Square)

Plastic Reversible Container Pallet



Technical Data

Dimensions 43.3x43.3x5.5 inches (1100x1100x140 mm)
Weight 60.0 lbs

Load Capacities

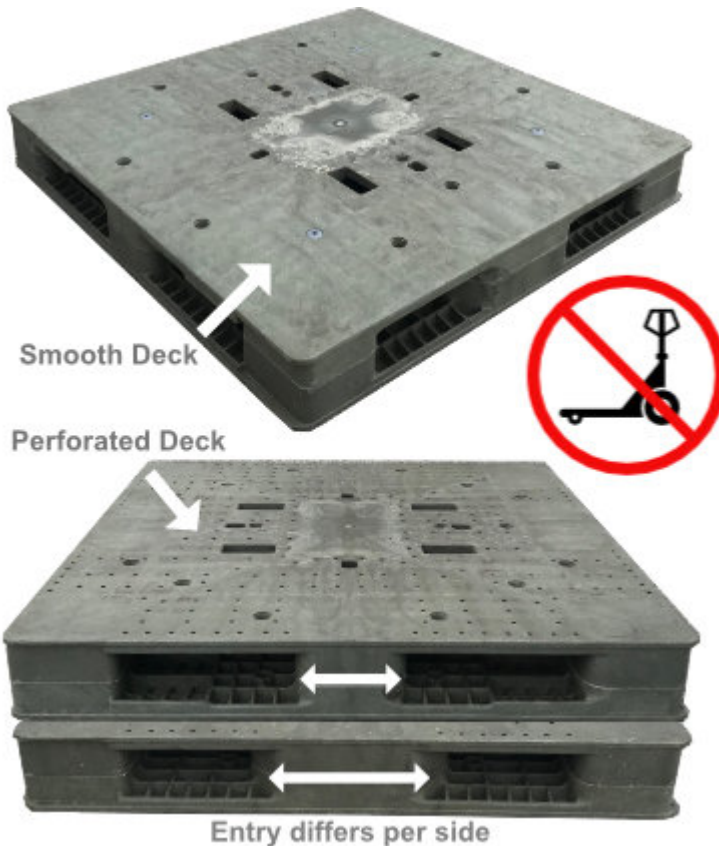
Static 10000 lbs
Dynamic 2500 lbs
Racking ST Req

Entry 4-way
Truckload Qty 480
Stack TL 16

Load capacities for used pallets may be unavailable or may have changed since issued. Unit load Sample Tests (ST) are recommended to confirm successful use with specific applications and equipment. TL (truckload) quantities are approximate and may vary by transport equipment or other factors.

Handling Data

Nestable No	Reusability One-Way & Multi-Trip	ISPM-15 Exempt Yes
Stackable Yes	Destination Captive & Export	Food Grade Yes, non-FDA
Rackable Yes	Airfreight No	Pharmaceutical Yes



Materials and Colors

Condition
Used

Material
HDPE/PP

Color
Varies

(High-Density Polypropylene/Polyethylene)

Colors and manufacturers vary and orders may be mixed. To avoid return freight charges ask your Sales Rep about special requests. All used pallets have been inspected and cleaned. Pallets may have limited cosmetic damage, but all are structurally sound.

Deck Specs

Top Deck
Closed

Bottom Deck
Reversible - Double-Sided

Features

Sturdy reversible pallet. Closed deck design features smooth surface on one side and perforated on other.

- Entry width varies by side
- Not suitable for pallet jack
- Allows for safe double stacking
- Cuts out shipping container to save costs
- Designed for Super Sack® and drum loads
- Easy-to-clean hygienic design
- Suitable for packaged food items
(not approved for direct food contact)
- Impervious to acids, fats, solvents and odors
- Resists water absorption & bacteria growth
- Inert to infestation, mold and mildew
- Consistently dimensionally accurate
- Exempt from ISPM 15 shipping regulations

Nelson™

The Nelson Company

(443) 649-5294

plastic@NelsonCompany.com

www.NelsonCompany.com

www.NelsonTechCenter.com