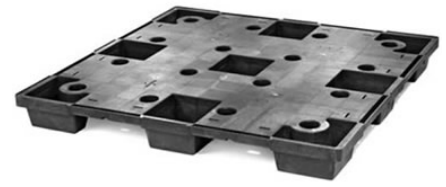


CPP630-C/PE

48x48 (Square) Plastic Industrial Pallet



Technical Data

Dimensions 48x48x4.9 inches (1219x1219x126 mm)
Weight 27.5 lbs

Load Capacities

Static 8800 lbs
Dynamic 2600 lbs
Racking --

Entry 4-way
Truckload Qty 1238
Stack TL 46

TL (truckload) quantities are approximate and may vary by transport equipment or other factors.

Handling Data

Nestable Yes	Reusability Multi-Trip	ISPM-15 Exempt Yes
Stackable No	Destination Captive & Export	Food Grade Yes, non-FDA
Rackable No	Airfreight Yes	Pharmaceutical --



Materials and Colors

Condition
New

Material HDPE/PP (Recycled) HDPE/PP (Virgin*)	Color Black Gray/Custom*
------------------------------------------------------------	---------------------------------------

(High-Density Polyethylene/Polypropylene)

*Custom colors and markings available in virgin material.
(Minimum quantities required.)

Deck Specs

Top Deck
Closed

Bottom Deck
9 Feet - Nesting

Features

- Square multipurpose pallet
- Lightweight and low height
- Nesting saves storage & shipping costs
- Easy-to-clean hygienic design
- Suitable for packaged food items
(not approved for direct food contact)
- Impervious to acids, fats, solvents and odors
- Resists water absorption & bacteria growth
- Inert to infestation, mold and mildew
- Consistently dimensionally accurate
- Exempt from ISPM 15 shipping regulations

NelsonTM

The Nelson Company

(443) 649-5294

plastic@NelsonCompany.com

www.NelsonCompany.com

www.NelsonTechCenter.com