

CPP320-C/ACM

48x40 (Standard) Plastic Industrial Pallet



Technical Data

Dimensions 48x40x5.5 inches (1219x1016x140 mm)
Weight 23.0 lbs

Load Capacities

Static 8800 lbs
Dynamic 2800 lbs
Racking --

Entry 4-way
Truckload Qty 1800
Stack TL 60

TL (truckload) quantities are approximate and may vary by transport equipment or other factors.

Handling Data

Nestable
Yes

Reusability
One-Way

ISPM-15 Exempt
Yes

Stackable
No

Destination
Export

Food Grade
Yes, non-FDA

Rackable
No

Airfreight
Yes

Pharmaceutical
Yes

Materials and Colors

Condition
New

Material
ACM (Recycled)

Color
Black

Deck Specs

Top Deck
Closed

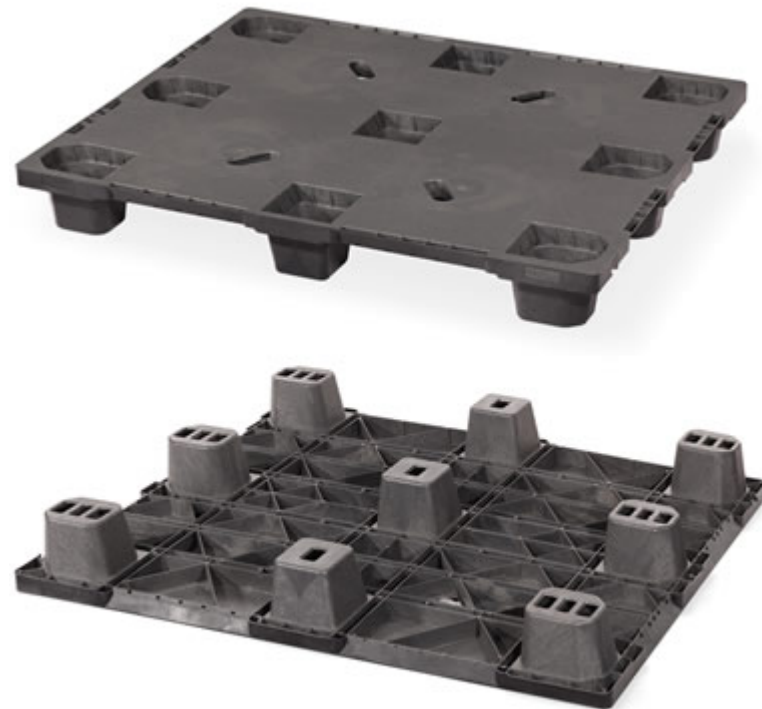
Bottom Deck
9 Feet - Nesting

Available Options:
Open Top = CPP32#
Closed Top = CPP32#-C

CPP320 - No skids (nestable)
CPP323 - 3 Runner snap-on skids*
CPP326 - 6 Runner snap-on skids*
*Order with skids off for lower shipping cost

Features

- 13% more per stack (60 vs 52): less floor space, more in a truckload = less inbound freight
- Angled sides for easier fork time access when splitting the stack
- Notch on the side for stretch wrap hook
- New handle cut into the top deck for easier handling
- Nesting saves storage & shipping costs
- Low-cost Plastic Pallet
- Easy-to-clean hygienic design
- Suitable for packaged food items
(not approved for direct food contact)
- Impervious to acids, fats, solvents and odors
- Resists water absorption & bacteria growth
- Inert to infestation, mold and mildew
- Consistently dimensionally accurate
- Exempt from ISPM 15 shipping regulations



NelsonTM

The Nelson Company

(443) 649-5294

plastic@NelsonCompany.com

www.NelsonCompany.com

www.NelsonTechCenter.com

Spec Sheet Generated On: 5/22/2024

Specs subject to change without notice. Provided for informational purposes only. Technical data are guideline values and may vary based on intended use, features, raw materials and environment. Nothing shall be construed as warranties or guarantees, express or implied, regarding products or their use, application, performance or otherwise.