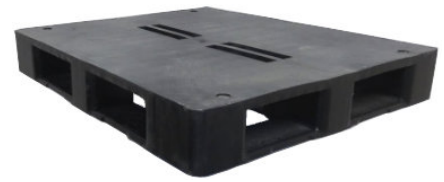


# UP-1210-FP-CD50lbs

## 48x40 (Standard) Plastic Industrial Pallet



### Technical Data

Dimensions 47.2x39.4x5.9 inches (1200x1000x150 mm)  
Weight 50 lbs

**Load Capacities**  
Static 10000 lbs  
Dynamic 2500 lbs  
Racking 2000 lbs

Entry 4-way  
Truckload Qty 480  
Stack TL / LTL -- / 16

Load capacities for used pallets may be unavailable or may have changed since issued. Unit load Sample Tests (ST) are recommended to confirm successful use with specific applications and equipment. TL (truckload) and LTL (less-than-truckload) quantities are approximate and may vary by transport equipment or other factors.

### Handling Data

<b>Nestable</b> No	<b>Reusability</b> One-Way & Multi-Trip	<b>ISPM-15 Exempt</b> Yes
<b>Stackable</b> Yes	<b>Destination</b> Captive & Export	<b>Food Grade</b> Yes, non-FDA
<b>Rackable</b> Yes	<b>Airfreight</b> No	<b>Pharmaceutical</b> Yes

### Materials and Colors

**Condition**  
Used

**Material** HDPE  
**Color** Varies

(High-Density Polyethylene)

Colors and manufacturers vary and orders may be mixed. To avoid return freight charges ask your Sales Rep about special requests. All used pallets have been inspected and cleaned. Pallets may have limited cosmetic damage, but all are structurally sound.

### Deck Specs

**Top Deck**  
Closed

**Bottom Deck**  
5 Runner - Perimeter+1 Long Side

### Features

Mixed lot of mostly black

- Allows for safe double stacking
- Easy-to-clean hygienic design
- Suitable for packaged food items  
(not approved for direct food contact)
- Impervious to acids, fats, solvents and odors
- Resists water absorption & bacteria growth
- Inert to infestation, mold and mildew
- Consistently dimensionally accurate
- Exempt from ISPM 15 shipping regulations



**Nelson**<sup>TM</sup>

The Nelson Company

(443) 649-5294

[plastic@NelsonCompany.com](mailto:plastic@NelsonCompany.com)

[www.NelsonCompany.com](http://www.NelsonCompany.com)

[www.NelsonTechCenter.com](http://www.NelsonTechCenter.com)