

# TE-4840-N-TDOW

## 48x40 (Standard) Plastic Industrial Pallet



### Technical Data

Dimensions 48x40x5.25 inches  
Weight 11.5 lbs

#### Load Capacities

Static 9000 lbs  
Dynamic 2200 lbs  
Racking --

Entry 4-way  
Truckload Qty 1920  
Stack TL 64

TL (truckload) quantities are approximate and may vary by transport equipment or other factors.

### Handling Data

**Nestable**  
Yes

**Reusability**  
One-Way & Multi-Trip

**ISPM-15 Exempt**  
Yes

**Stackable**  
No

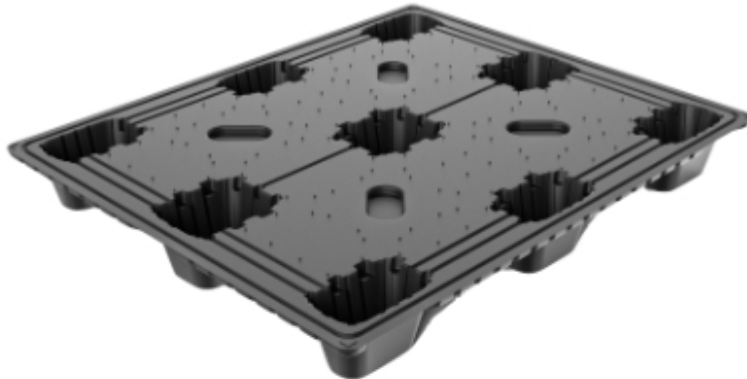
**Destination**  
Export & Captive

**Food Grade**  
Yes, non-FDA

**Rackable**  
No

**Airfreight**  
Yes

**Pharmaceutical**  
Yes



### Materials and Colors

**Condition**  
New

**Material**  
HDPE (Recycled)

**Color**  
Black

(High-Density Polyethylene)

### Deck Specs

**Top Deck**  
Closed

**Bottom Deck**  
9 Feet - Nesting

### Features

- Thermoformed Twin Sheet Construction
- Impact Absorbing TriMax™ design for added stiffness and durability
- Lightweight for better ergonomics
- Oval leg design minimizes damage caused by fork-tines
- Nesting saves storage & shipping costs
- Easy-to-clean hygienic design
- Suitable for packaged food items  
(not approved for direct food contact)
- Impervious to acids, fats, solvents and odors
- Resists water absorption & bacteria growth
- Inert to infestation, mold and mildew
- Consistently dimensionally accurate
- Exempt from ISPM 15 shipping regulations

**Nelson™**

The Nelson Company

(443) 649-5294

[plastic@NelsonCompany.com](mailto:plastic@NelsonCompany.com)

[www.NelsonCompany.com](http://www.NelsonCompany.com)

[www.NelsonTechCenter.com](http://www.NelsonTechCenter.com)

Spec Sheet Generated On: 5/22/2024

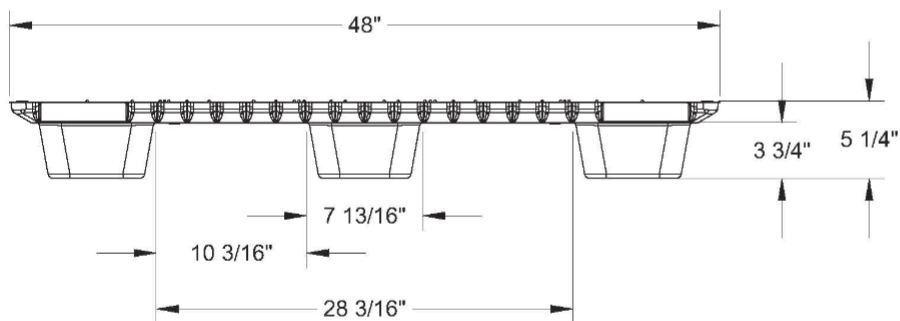
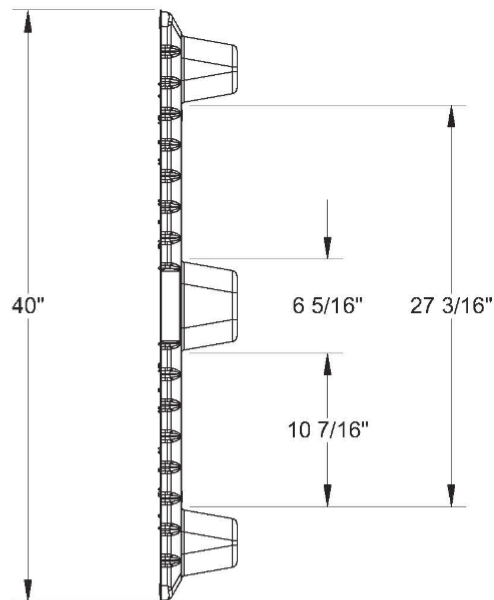
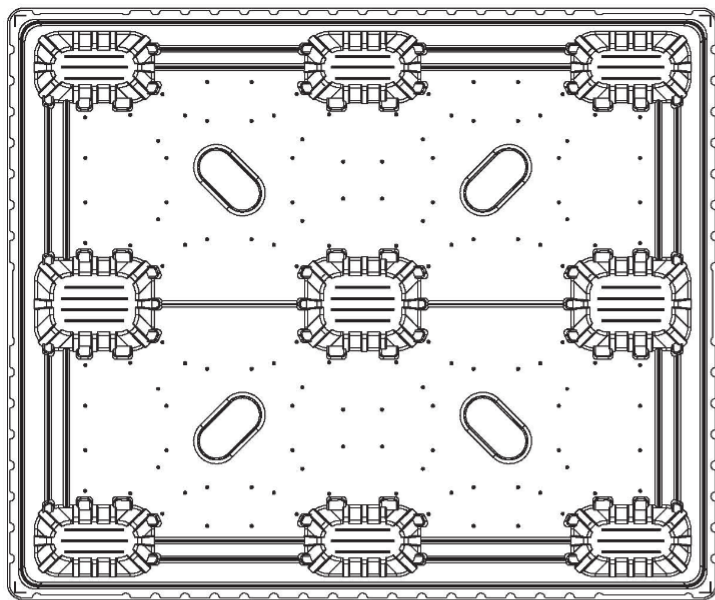
Specs subject to change without notice. Provided for informational purposes only. Technical data are guideline values and may vary based on intended use, features, raw materials and environment. Nothing shall be construed as warranties or guarantees, express or implied, regarding products or their use, application, performance or otherwise.

# TE-4840-N-TDOW

48x40 (Standard)  
Plastic Industrial Pallet



## Technical Drawings



**Nelson**<sup>TM</sup>

The Nelson Company

(443) 649-5294

[plastic@NelsonCompany.com](mailto:plastic@NelsonCompany.com)

[www.NelsonCompany.com](http://www.NelsonCompany.com)

[www.NelsonTechCenter.com](http://www.NelsonTechCenter.com)