

UP-1210-3R-150mm40lbs

48x40 (Standard) Plastic Industrial Pallet



Technical Data

Dimensions 47.25x39.25x6 inches (1200x1000x150 mm)
Weight 40 lbs

Load Capacities

Static 11000 lbs
Dynamic 2750 lbs
Racking ST Req

Entry 4-way
Truckload Qty 450
Stack TL 15

Load capacities for used pallets may be unavailable or may have changed since issued. Unit load Sample Tests (ST) are recommended to confirm successful use with specific applications and equipment. TL (truckload) quantities are approximate and may vary by transport equipment or other factors.

Handling Data

Nestable No	Reusability One-Way & Multi-Trip	ISPM-15 Exempt Yes
Stackable Yes	Destination Captive & Export	Food Grade Yes, non-FDA
Rackable Yes	Airfreight No	Pharmaceutical Yes

Materials and Colors

Condition
Used

Material HDPE
Color Varies

(High-Density Polyethylene)

Colors and manufacturers vary and orders may be mixed. To avoid return freight charges ask your Sales Rep about special requests. All used pallets have been inspected and cleaned. Pallets may have limited cosmetic damage, but all are structurally sound.

Deck Specs

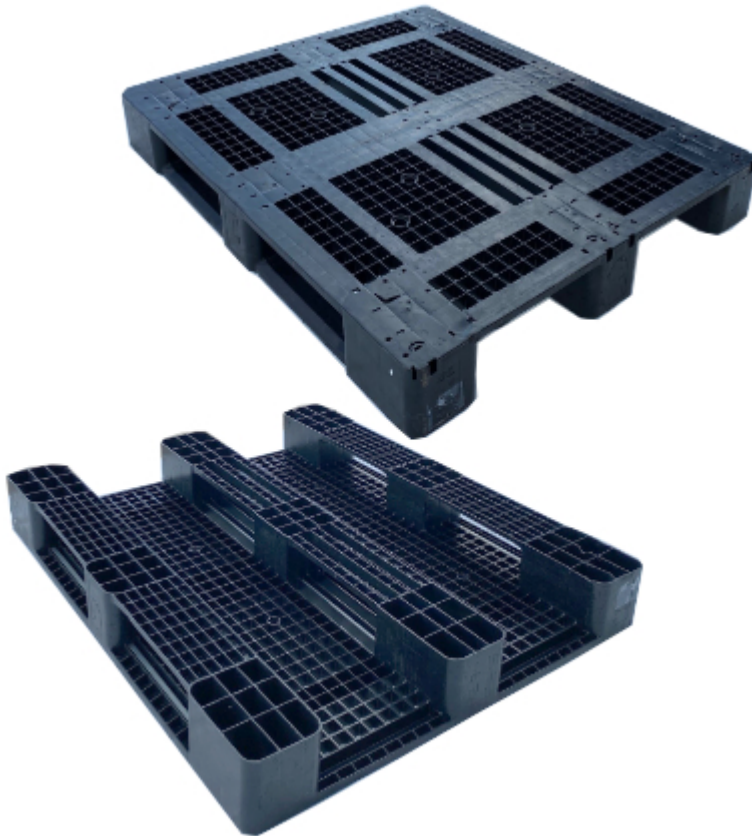
Top Deck
Open

Bottom Deck
3 Runner - Unidirectional Long Side

Features

Mixed lot of black and other colors

- Allows for safe double stacking
- Easy-to-clean hygienic design
- Suitable for packaged food items
(not approved for direct food contact)
- Impervious to acids, fats, solvents and odors
- Resists water absorption & bacteria growth
- Inert to infestation, mold and mildew
- Consistently dimensionally accurate
- Exempt from ISPM 15 shipping regulations



Nelson™

The Nelson Company

(443) 649-5294

plastic@NelsonCompany.com

www.NelsonCompany.com

www.NelsonTechCenter.com