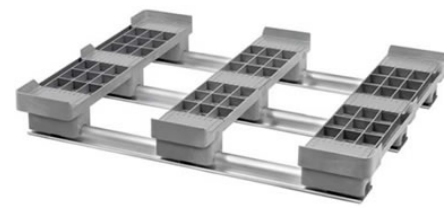


CPPSHUTTLE/PE

48x40 (Standard) Plastic Pallet Shuttle



Technical Data

Dimensions 47.2x31.5x5.5 inches (1200x800x140 mm)
Weight 33.0 lbs

Load Capacities

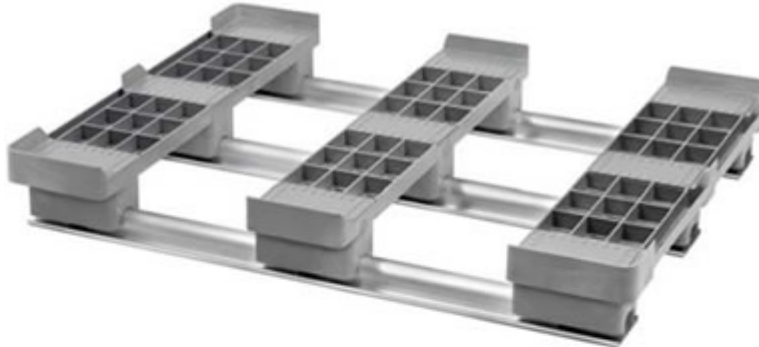
Static 22000 lbs
Dynamic 4400 lbs
Racking 2800 lbs

Entry 2-way
Truckload Qty --
Stack TL --

TL (truckload) quantities are approximate and may vary by transport equipment or other factors.

Handling Data

| | | |
|------------------------|----------------------------------|-----------------------------------|
| Nestable No | Reusability Multi-Trip | ISPM-15 Exempt Yes |
| Stackable -- | Destination Captive | Food Grade Yes, non-FDA |
| Rackable Yes | Airfreight Yes | Pharmaceutical Yes |



Materials and Colors

Condition
New

Material
HDPE/PP (Recycled)
HDPE/PP (Virgin*)

Color
Black
Gray/Custom*

(High-Density Polyethylene/Polypropylene)

*Custom colors and markings available in virgin material.
(Minimum quantities required.)

Deck Specs

Top Deck
Open

Bottom Deck
3 Runner - Unidirectional Long Side

Features

Storage and transport solution for automated high-racking systems.

- Designed for use in ASRS systems
- Easy-to-clean hygienic design
- Suitable for packaged food items
(*not approved for direct food contact*)
- Impervious to acids, fats, solvents and odors
- Resists water absorption & bacteria growth
- Inert to infestation, mold and mildew
- Consistently dimensionally accurate
- Exempt from ISPM 15 shipping regulations

NelsonTM

The Nelson Company

(443) 649-5294

plastic@NelsonCompany.com

www.NelsonCompany.com

www.NelsonTechCenter.com