

# CPP320-C/PE

## 48x40 (Standard) Plastic Industrial Pallet



### Technical Data

Dimensions 48x40x5.5 inches (1219x1016x140 mm)  
Weight 21.0 lbs

#### Load Capacities

Static 8800 lbs  
Dynamic 2800 lbs  
Racking --

Entry 4-way  
Truckload Qty 1800  
Stack TL 60

TL (truckload) quantities are approximate and may vary by transport equipment or other factors.

### Handling Data

<b>Nestable</b> Yes	<b>Reusability</b> Multi-Trip	<b>ISPM-15 Exempt</b> Yes
<b>Stackable</b> No	<b>Destination</b> Captive	<b>Food Grade</b> Yes, non-FDA
<b>Rackable</b> No	<b>Airfreight</b> Yes	<b>Pharmaceutical</b> Yes

### Materials and Colors

**Condition**  
New

<b>Material</b> HDPE/PP (Recycled) HDPE/PP (Virgin*)	<b>Color</b> Black Gray/Custom*
--	---------------------------------------

(High-Density Polyethylene/Polypropylene)

\*Custom colors and markings available in virgin material.  
(Minimum quantities required.)

### Deck Specs

**Top Deck**  
Closed

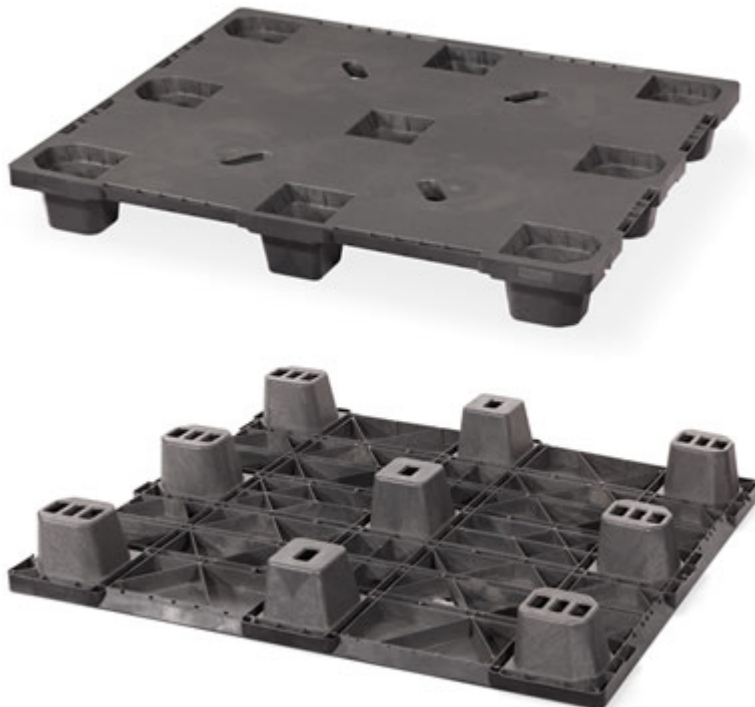
**Bottom Deck**  
9 Feet - Nesting

**Available Options:**  
Open Top = CPP32#  
Closed Top = CPP32#-C

CPP320 - No skids (nestable)  
CPP323 - 3 Runner snap-on skids\*  
CPP326 - 6 Runner snap-on skids\*  
\*Order with skids off for lower shipping cost

### Features

- 13% more per stack (60 vs 52): less floor space, more in a truckload = less inbound freight
- Angled sides for easier fork time access when splitting the stack
- Notch on the side for stretch wrap hook
- New handle cut into the top deck for easier handling
- Nesting saves storage & shipping costs
- Easy-to-clean hygienic design
- Suitable for packaged food items  
(not approved for direct food contact)
- Impervious to acids, fats, solvents and odors
- Resists water absorption & bacteria growth
- Inert to infestation, mold and mildew
- Consistently dimensionally accurate
- Exempt from ISPM 15 shipping regulations



**Nelson**™

The Nelson Company

(443) 649-5294

[plastic@NelsonCompany.com](mailto:plastic@NelsonCompany.com)

[www.NelsonCompany.com](http://www.NelsonCompany.com)

[www.NelsonTechCenter.com](http://www.NelsonTechCenter.com)

Spec Sheet Generated On: 5/19/2024

Specs subject to change without notice. Provided for informational purposes only. Technical data are guideline values and may vary based on intended use, features, raw materials and environment. Nothing shall be construed as warranties or guarantees, express or implied, regarding products or their use, application, performance or otherwise.