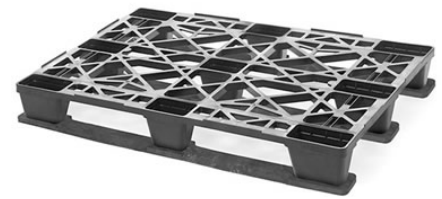


# UP-1280-3R-213PE

48x32 (Euro)

Plastic Industrial Pallet



## Technical Data

Dimensions 47.2x31.5x5.9 inches (1200x800x150 mm)  
Weight 26 lbs

### Load Capacities

Static 14100 lbs  
Dynamic 3500 lbs  
Racking 1100 lbs

Entry 4-way  
Truckload Qty 646  
Stack TL 17

Load capacities for used pallets may be unavailable or may have changed since issued. Unit load Sample Tests (ST) are recommended to confirm successful use with specific applications and equipment. TL (truckload) quantities are approximate and may vary by transport equipment or other factors.

## Handling Data

|                         |                                            |                                   |
|-------------------------|--------------------------------------------|-----------------------------------|
| <b>Nestable</b><br>No   | <b>Reusability</b><br>One-Way & Multi-Trip | <b>ISPM-15 Exempt</b><br>Yes      |
| <b>Stackable</b><br>Yes | <b>Destination</b><br>Captive & Export     | <b>Food Grade</b><br>Yes, non-FDA |
| <b>Rackable</b><br>Yes  | <b>Airfreight</b><br>Yes                   | <b>Pharmaceutical</b><br>Yes      |



New product image shown for illustrative purposes only.  
Actual product is in used condition.

## Materials and Colors

**Condition**  
Used

**Material**  
HDPE/PP (Recycled)

**Color**  
Varies

(High-Density Polyethylene/Polypropylene)

Colors and manufacturers vary and orders may be mixed. To avoid return freight charges ask your Sales Rep about special requests. All used pallets have been inspected and cleaned. Pallets may have limited cosmetic damage, but all are structurally sound.

## Deck Specs

**Top Deck**  
Open

**Bottom Deck**  
3 Runner - Unidirectional Long Side

Snap-on skids already installed

## Features

- Standard size used across EU
- Design is popular in rail freight applications
- Allows for safe double stacking
- Easy-to-clean hygienic design
- Suitable for packaged food items  
(not approved for direct food contact)
- Impervious to acids, fats, solvents and odors
- Resists water absorption & bacteria growth
- Inert to infestation, mold and mildew
- Consistently dimensionally accurate
- Exempt from ISPM 15 shipping regulations

**Nelson**<sup>TM</sup>

The Nelson Company  
(443) 649-5294

[plastic@NelsonCompany.com](mailto:plastic@NelsonCompany.com)

[www.NelsonCompany.com](http://www.NelsonCompany.com)

[www.NelsonTechCenter.com](http://www.NelsonTechCenter.com)