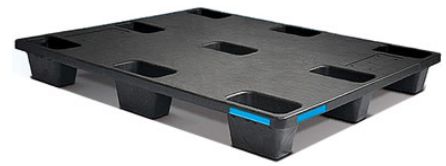


# PP4840N-Rnest

## 48x40 (Standard) Plastic Industrial Pallet



### Technical Data

Dimensions	48x40x5.75 inches
Weight	34 lbs
<b>Load Capacities</b>	
Static	30000 lbs
Dynamic	4000 lbs
Racking	--
Entry	4-way
Truckload Qty	1020
Stack TL	34

TL (truckload) quantities are approximate and may vary by transport equipment or other factors.

### Handling Data

<b>Nestable</b> Yes	<b>Reusability</b> One-Way & Multi-Trip	<b>ISPM-15 Exempt</b> Yes
<b>Stackable</b> --	<b>Destination</b> Captive & Export	<b>Food Grade</b> Yes, non-FDA
<b>Rackable</b> No	<b>Airfreight</b> Yes	<b>Pharmaceutical</b> Yes



### Materials and Colors

**Condition**  
New

**Material**  
HDPE (Recycled)

**Color**  
Black

(High-Density Polyethylene)

### Deck Specs

**Top Deck**  
Closed

**Bottom Deck**  
9 Feet - Nesting

Available Options:  
Colored Side Stripes for easy ID  
Embossed Customized Name Plates  
Custom In-Mold Side Labeling  
Hot Stamping

### Features

- Nesting saves storage & shipping costs
- Easy-to-clean hygienic design
- Suitable for packaged food items  
(not approved for direct food contact)
- Impervious to acids, fats, solvents and odors
- Resists water absorption & bacteria growth
- Inert to infestation, mold and mildew
- Consistently dimensionally accurate
- Exempt from ISPM 15 shipping regulations

**Nelson™**

The Nelson Company

(443) 649-5294

[plastic@NelsonCompany.com](mailto:plastic@NelsonCompany.com)

[www.NelsonCompany.com](http://www.NelsonCompany.com)

[www.NelsonTechCenter.com](http://www.NelsonTechCenter.com)