

NPP-4840-FP-E6CD-3Rod

48x40 (Standard) Plastic Industrial Pallet



Technical Data

Dimensions 48x40x6.1 inches (1219x1016x155 mm)
Weight 54.0 lbs

Load Capacities

Static 11200 lbs
Dynamic 5600 lbs
Racking 2800 lbs

Entry 4-way
Truckload Qty 510
Stack TL / LTL 17 / 15

TL (truckload) and LTL (less-than-truckload) quantities are approximate and may vary by transport equipment or other factors.

Handling Data

| | | |
|-------------------------|----------------------------------|-----------------------------------|
| Nestable No | Reusability Multi-Trip | ISPM-15 Exempt Yes |
| Stackable Yes | Destination Captive | Food Grade Yes, non-FDA |
| Rackable Yes | Airfreight Yes | Pharmaceutical Yes |

Materials and Colors

Condition
New

Material HDPP (Recycled) **Color** Black (custom colors available)

Deck Specs

Top Deck
Closed

Bottom Deck
6 Runner - Perimeter+2 Cross
(cruciform perimeter base)

Available Options:
RFID Transponders
Individual Markings
Anti-Slip Bottom Grommets and Top Safety Rim
FDA Version

Features

Ideal for closed loops or distribution chains across industry sectors including Electronics, Food, Retail, Medical and Pharmaceutical.

- High performance at low cost
- Includes 3 Rod Inserts for Increased Performance
- Allows for safe double stacking
- Easy-to-clean hygienic design
- Suitable for packaged food items
(*not approved for direct food contact*)
- Impervious to acids, fats, solvents and odors
- Resists water absorption & bacteria growth
- Inert to infestation, mold and mildew
- Consistently dimensionally accurate
- Exempt from ISPM 15 shipping regulations



NelsonTM

The Nelson Company

(443) 649-5294

plastic@NelsonCompany.com

www.NelsonCompany.com

www.NelsonTechCenter.com

Spec Sheet Generated On: 6/2/2024

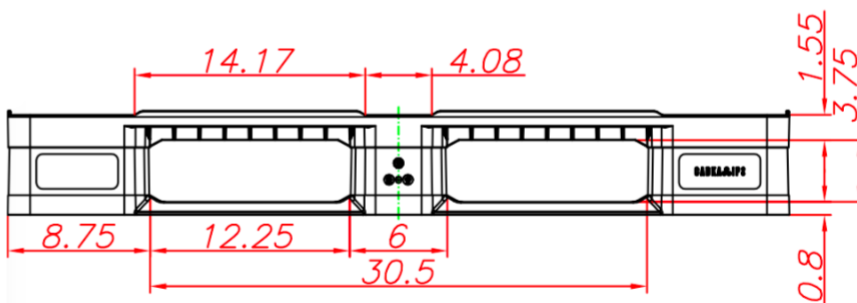
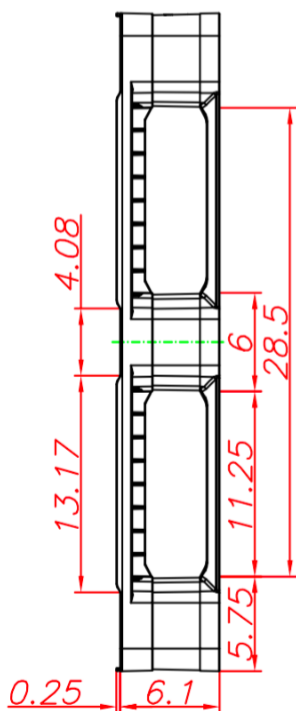
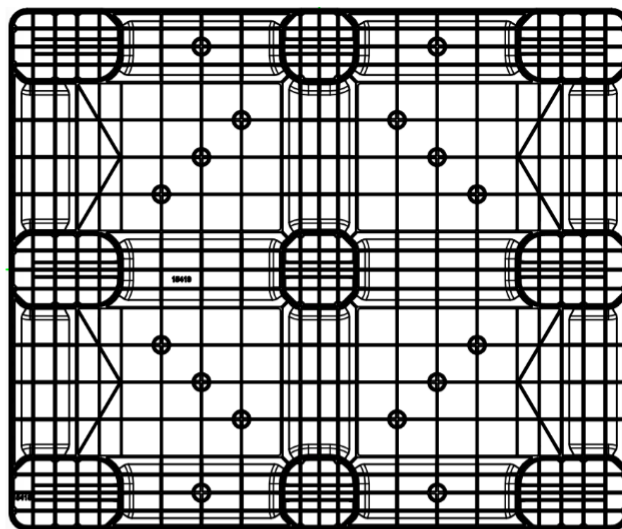
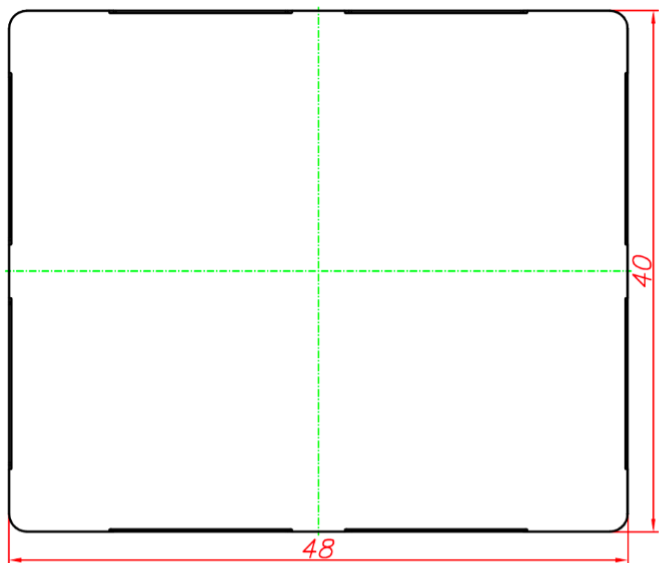
Specs subject to change without notice. Provided for informational purposes only. Technical data are guideline values and may vary based on intended use, features, raw materials and environment. Nothing shall be construed as warranties or guarantees, express or implied, regarding products or their use, application, performance or otherwise.

NPP-4840-FP-E6CD-3Rod

48x40 (Standard)
Plastic Industrial Pallet



Technical Drawings



NelsonTM

The Nelson Company

(443) 649-5294

plastic@NelsonCompany.com

www.NelsonCompany.com

www.NelsonTechCenter.com