

NPP-4840-FP-E6CD-FDA

48x40 (Standard) Plastic Industrial Pallet



Technical Data

Dimensions 48x40x6.1 inches (1219x1016x155 mm)
Weight 40.0 lbs

Load Capacities

Static 8800 lbs
Dynamic 4400 lbs
Racking 2200 lbs

Entry 4-way
Truckload Qty 510
Stack TL / LTL 17 / 15

TL (truckload) and LTL (less-than-truckload) quantities are approximate and may vary by transport equipment or other factors.

Handling Data

Nestable No	Reusability Multi-Trip	ISPM-15 Exempt Yes
Stackable Yes	Destination Captive	Food Grade FDA Approved
Rackable Yes	Airfreight Yes	Pharmaceutical Yes

Materials and Colors

Condition
New

Material
HDPP

Color
Blue

(Virgin)

Deck Specs

Top Deck
Closed

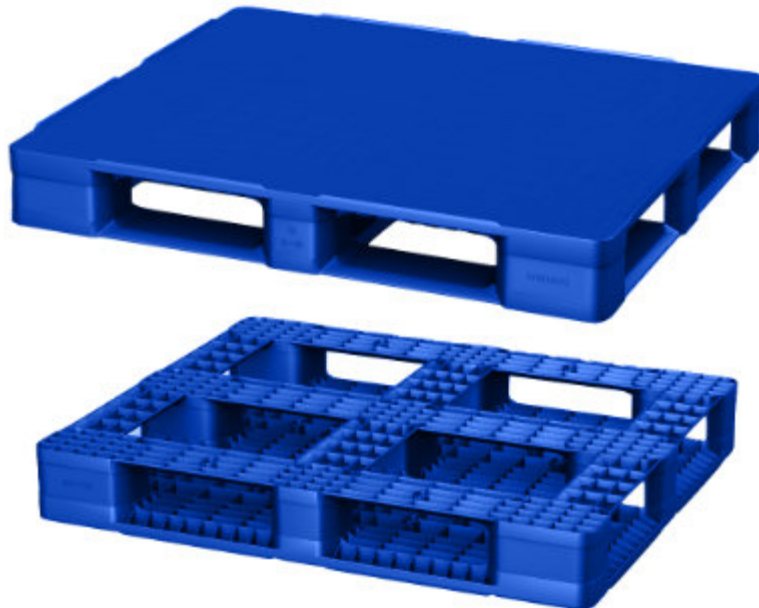
Bottom Deck
6 Runner - Perimeter+2 Cross
(cruciform perimeter base)

Available Options:
RFID Transponders
Individual Markings
Anti-Slip Bottom Grommets
ESD Prevention for Anti-Static
Rod Inserts for Increased Performance.

Features

Ideal for closed loops or distribution chains across industry sectors including Food, Retail, Medical and Pharmaceutical.

- High performance at low cost
- Top Safety Rim
- Allows for safe double stacking
- Impervious to acids, fats, solvents and odors
- Resists water absorption & bacteria growth
- Inert to infestation, mold and mildew
- Consistently dimensionally accurate
- Exempt from ISPM 15 shipping regulations



Nelson™

The Nelson Company

(443) 649-5294

plastic@NelsonCompany.com

www.NelsonCompany.com

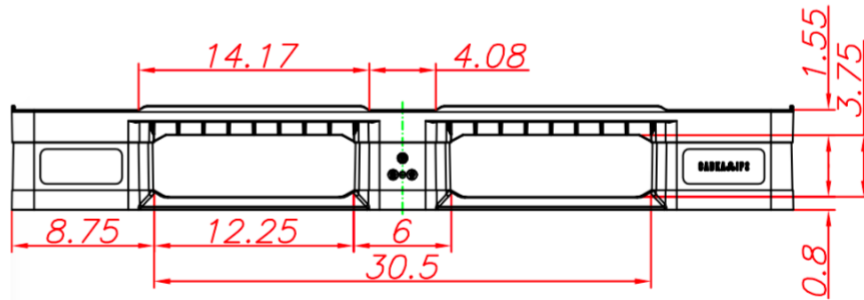
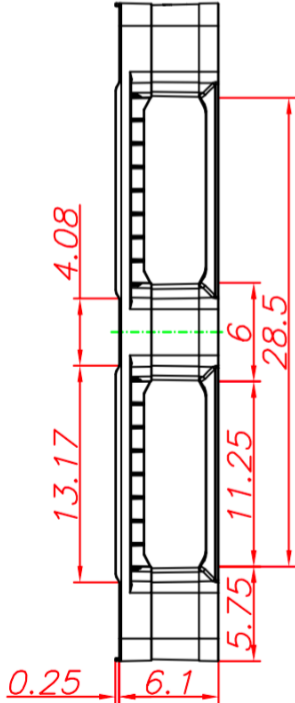
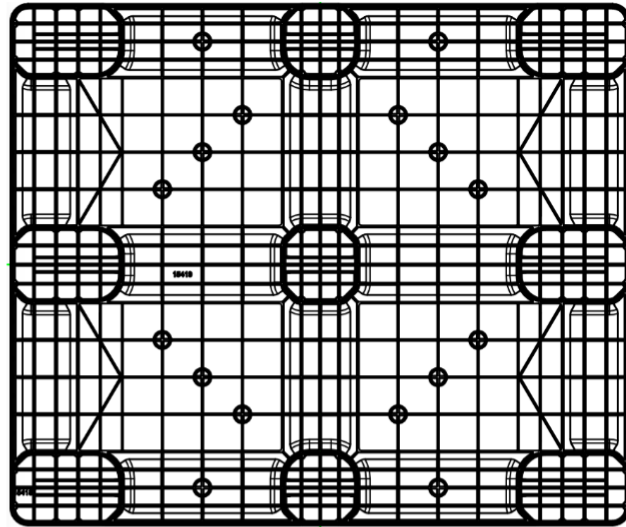
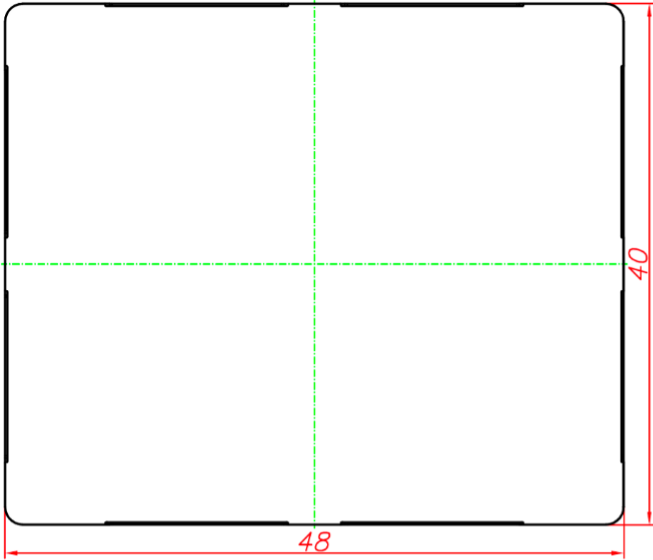
www.NelsonTechCenter.com

NPP-4840-FP-E6CD-FDA

48x40 (Standard)
Plastic Industrial Pallet



Technical Drawings



NelsonTM

The Nelson Company

(443) 649-5294

plastic@NelsonCompany.com

www.NelsonCompany.com

www.NelsonTechCenter.com