

CT-4840-N-ExpCD-C

48x40 (Standard) Plastic Industrial Pallet



Technical Data

Dimensions 48x40x5 inches (1219x1016x127 mm)
Weight 20.0 lbs

Load Capacities

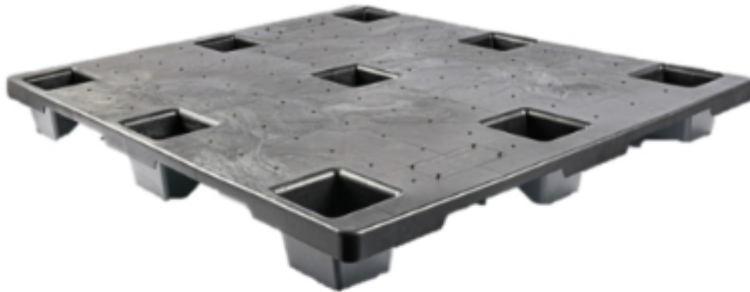
Static 2200 lbs
Dynamic 1200 lbs
Racking --

Entry 4-way
Truckload Qty 1500
Stack TL 50

TL (truckload) quantities are approximate and may vary by transport equipment or other factors.

Handling Data

Nestable Yes	Reusability One-Way & Multi-Trip	ISPM-15 Exempt Yes
Stackable --	Destination Captive & Export	Food Grade Yes, non-FDA
Rackable No	Airfreight Yes	Pharmaceutical Yes



Materials and Colors

Condition
New

Material
HDPE/PP (Recycled)

Color
Black / Gray

(Economical C-Grade)

Deck Specs

Top Deck
Closed

Bottom Deck
9 Feet - Nesting

Available Options:
3 Runners (adds 3 lbs)
Durable B-Grade Material

Features

Economical C-Grade material blend does not include colorant and may result in varied pallet colors. Material formulation also has no impact modifiers resulting in a rigid pallet.

- Nesting saves storage & shipping costs
- Easy-to-clean hygienic design
- Suitable for packaged food items
(not approved for direct food contact)
- Impervious to acids, fats, solvents and odors
- Resists water absorption & bacteria growth
- Inert to infestation, mold and mildew
- Consistently dimensionally accurate
- Exempt from ISPM 15 shipping regulations

Nelson™

The Nelson Company

(443) 649-5294

plastic@NelsonCompany.com

www.NelsonCompany.com

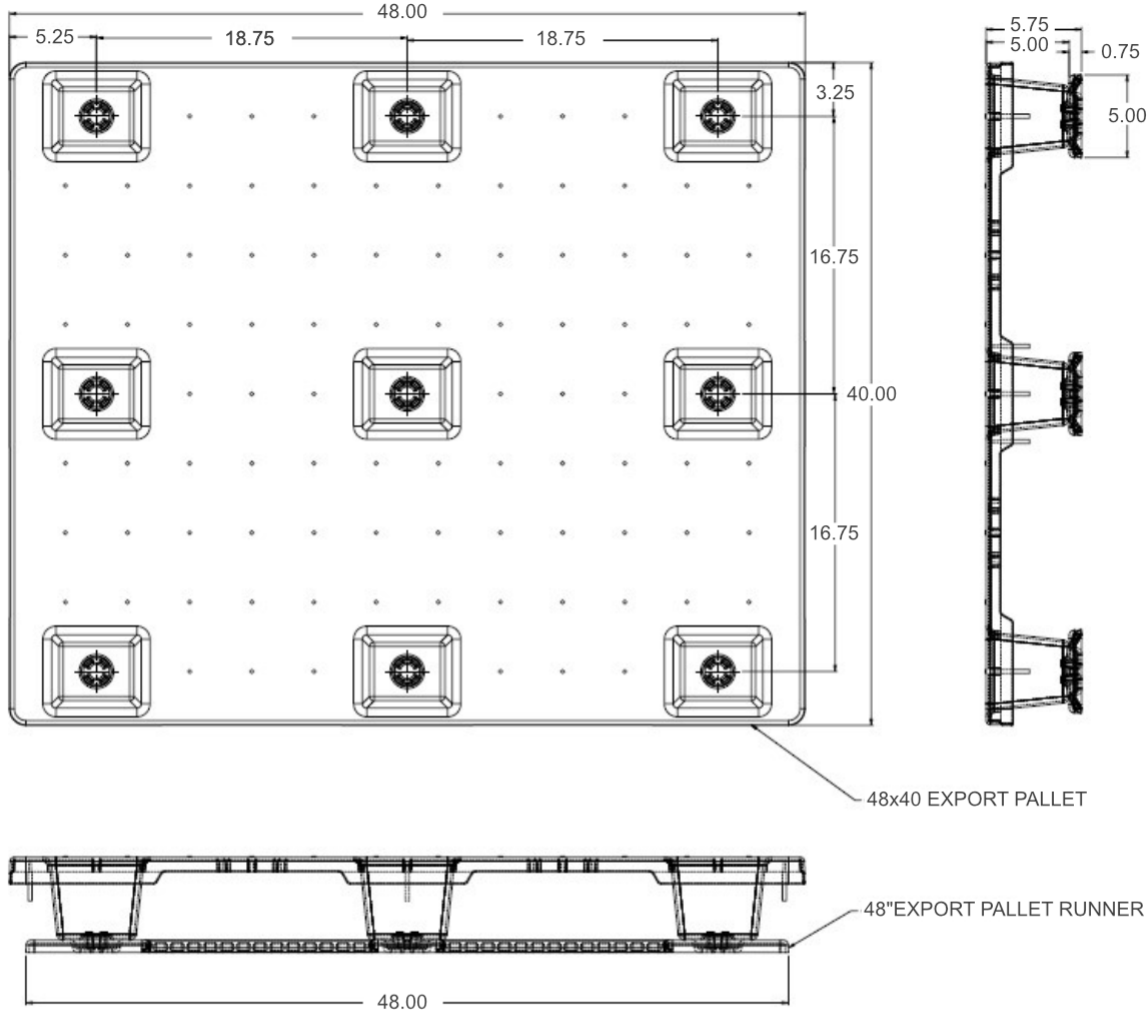
www.NelsonTechCenter.com

CT-4840-N-ExpCD-C

48x40 (Standard)
Plastic Industrial Pallet



Technical Drawings



NelsonTM

The Nelson Company

(443) 649-5294

plastic@NelsonCompany.com

www.NelsonCompany.com

www.NelsonTechCenter.com