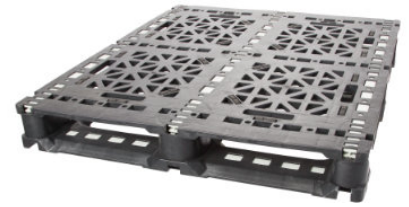


# GL-4840-FP-MV0Rod

## 48x40 (Standard) Plastic Industrial Pallet



### Technical Data

Dimensions 48x40x5.62 inches  
Weight 42.0 lbs

#### Load Capacities

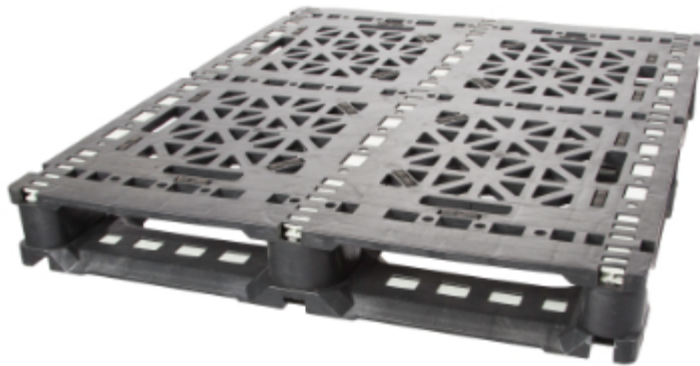
Static 15000 lbs  
Dynamic 5000 lbs  
Racking 800 lbs

Entry 4-way  
Truckload Qty 570  
Stack TL / LTL 19 / 17

TL (truckload) and LTL (less-than-truckload) quantities are approximate and may vary by transport equipment or other factors.

### Handling Data

<b>Nestable</b> No	<b>Reusability</b> One-Way & Multi-Trip	<b>ISPM-15 Exempt</b> Yes
<b>Stackable</b> Yes	<b>Destination</b> Captive & Export	<b>Food Grade</b> Yes, non-FDA
<b>Rackable</b> Yes	<b>Airfreight</b> Yes	<b>Pharmaceutical</b> Yes



### Materials and Colors

**Condition**  
New

**Material**  
HDPE (Recycled)

**Color**  
Black

(High-Density Polyethylene)

### Deck Specs

**Top Deck**  
Open

**Bottom Deck**  
6 Runner - Perimeter+2 Cross  
(cruciform perimeter base)

### Features

#### Available with Rod Insert Options:

0 Rod  
3 Rod  
5 Rod  
10 Rod

- Weather Resistant
- Conveyable
- Allows for safe double stacking
- Easy-to-clean hygienic design
- Suitable for packaged food items  
(not approved for direct food contact)
- Impervious to acids, fats, solvents and odors
- Resists water absorption & bacteria growth
- Inert to infestation, mold and mildew
- Consistently dimensionally accurate
- Exempt from ISPM 15 shipping regulations

**Nelson**<sup>TM</sup>

The Nelson Company

(443) 649-5294

[plastic@NelsonCompany.com](mailto:plastic@NelsonCompany.com)

[www.NelsonCompany.com](http://www.NelsonCompany.com)

[www.NelsonTechCenter.com](http://www.NelsonTechCenter.com)