

PG-4832-3R-150mm33lbsCD

48x32 (Euro)

Plastic Industrial Pallet



Technical Data

Dimensions 47.2x31.5x5.9 inches (1200x800x150 mm)
Weight 34.7 lbs

Load Capacities

Static 11023 lbs
Dynamic 3307 lbs
Racking 1543 lbs

Entry 4-way
Truckload Qty 684
Stack TL / LTL 18 / 16

TL (truckload) and LTL (less-than-truckload) quantities are approximate and may vary by transport equipment or other factors.

Handling Data

Nestable No	Reusability One-Way & Multi-Trip	ISPM-15 Exempt Yes
Stackable Yes	Destination Captive & Export	Food Grade Yes, non-FDA
Rackable Yes	Airfreight Yes	Pharmaceutical Yes

Materials and Colors

Condition
New

Material HDPP (Recycled) **Color** Black/Gray

(High-Density Polypropylene)

Deck Specs

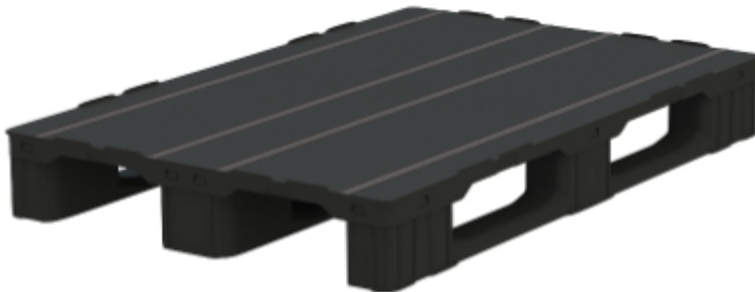
Top Deck
Closed

Bottom Deck
3 Runner - Unidirectional Long Side

Available Options:
PG-4832-3R-150mm33lbs - Open Deck
Safety Rims
Rubber and anti-slip gems / strips
GPS/IOT Tracking Device

Features

- Optimized to fit conveyors and automated systems
- Standard size used across EU
- Design is popular in rail freight applications
- Allows for safe double stacking
- Easy-to-clean hygienic design
- Suitable for packaged food items
(not approved for direct food contact)
- Impervious to acids, fats, solvents and odors
- Resists water absorption & bacteria growth
- Inert to infestation, mold and mildew
- Consistently dimensionally accurate
- Exempt from ISPM 15 shipping regulations



NelsonTM

The Nelson Company

(443) 649-5294

plastic@NelsonCompany.com

www.NelsonCompany.com

www.NelsonTechCenter.com

Spec Sheet Generated On: 5/18/2024

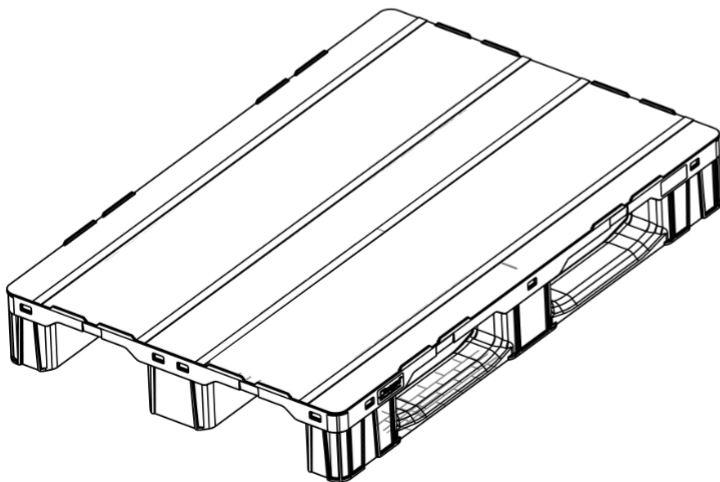
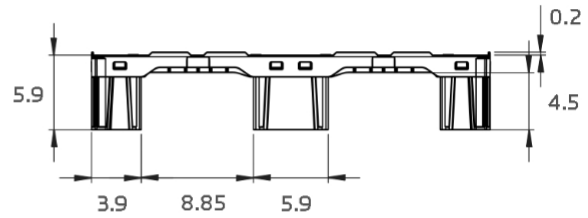
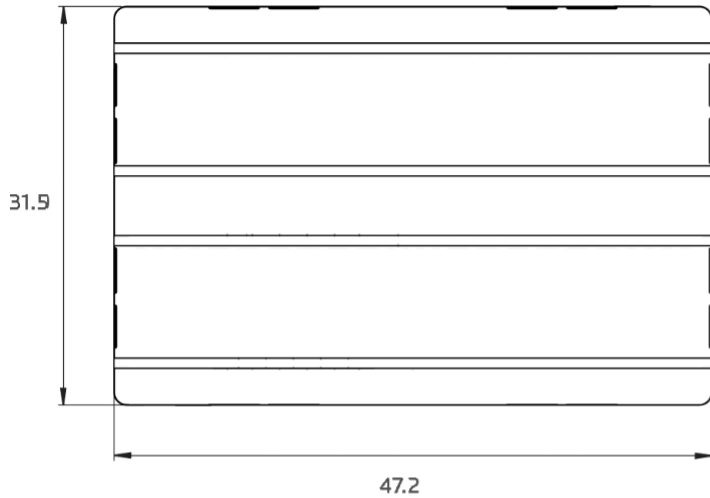
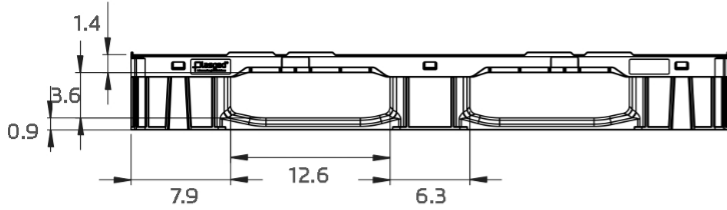
Specs subject to change without notice. Provided for informational purposes only. Technical data are guideline values and may vary based on intended use, features, raw materials and environment. Nothing shall be construed as warranties or guarantees, express or implied, regarding products or their use, application, performance or otherwise.

PG-4832-3R-150mm33lbsCD

48x32 (Euro)
Plastic Industrial Pallet



Technical Drawings



Nelson[™]

The Nelson Company

(443) 649-5294

plastic@NelsonCompany.com

www.NelsonCompany.com

www.NelsonTechCenter.com