

PG-4840-N-107USCD

48x40 (Standard) Plastic Industrial Pallet



Technical Data

Dimensions 48x40x5.1 inches
Weight 14.1 lbs

Load Capacities

Static 3300 lbs
Dynamic 2200 lbs
Racking --

Entry 4-way
Truckload Qty 2370
Stack TL 79

TL (truckload) quantities are approximate and may vary by transport equipment or other factors.

Handling Data

Nestable
Yes

Reusability
One-Way & Multi-Trip

ISPM-15 Exempt
Yes

Stackable
No

Destination
Export & Captive

Food Grade
Yes, non-FDA

Rackable
No

Airfreight
Yes

Pharmaceutical
Yes

Materials and Colors

Condition
New

Material
HDPE/PP (Recycled)

Color
Black

(High-Density Polyethylene/Polypropylene)

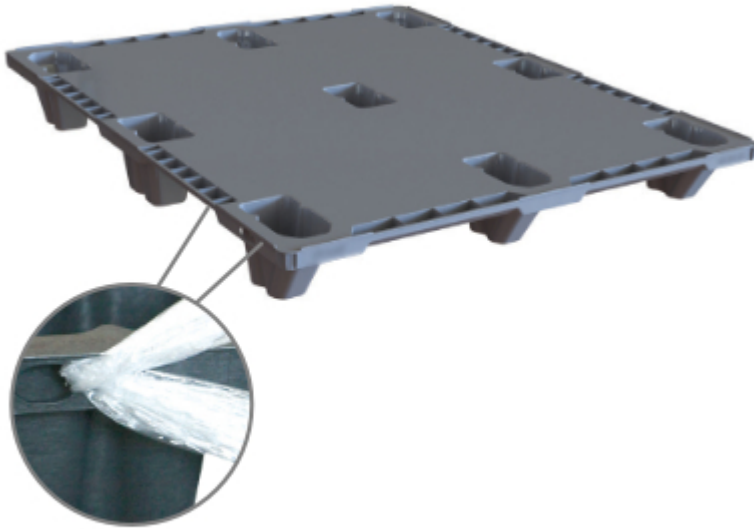
Deck Specs

Top Deck
Closed

Bottom Deck
9 Feet - Nesting

Features

- Available in food-grade FDA Material
- Safety Rim
- Designed to easily secure wrapping
- Nesting saves storage & shipping costs
- Easy-to-clean hygienic design
- Suitable for packaged food items
(not approved for direct food contact)
- Impervious to acids, fats, solvents and odors
- Resists water absorption & bacteria growth
- Inert to infestation, mold and mildew
- Consistently dimensionally accurate
- Exempt from ISPM 15 shipping regulations



NelsonTM

The Nelson Company

(443) 649-5294

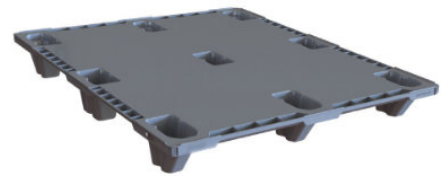
plastic@NelsonCompany.com

www.NelsonCompany.com

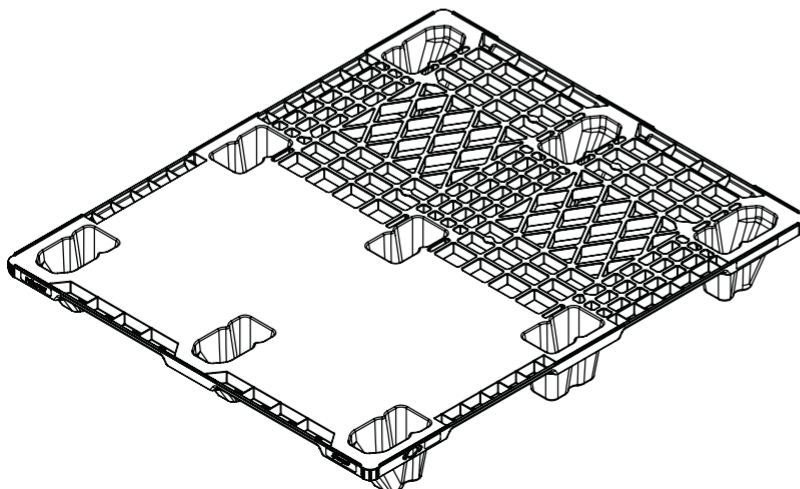
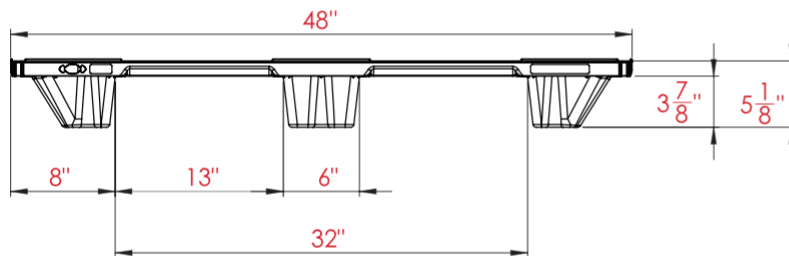
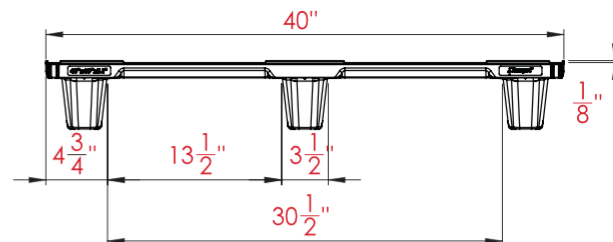
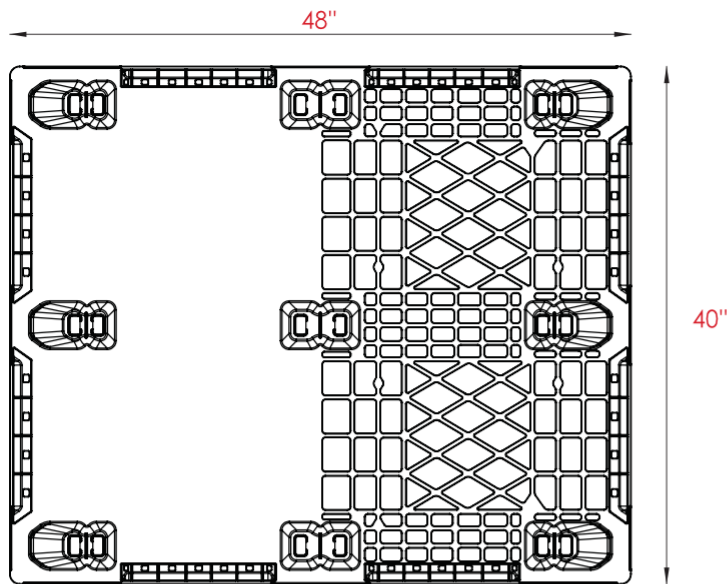
www.NelsonTechCenter.com

PG-4840-N-107USCD

48x40 (Standard)
Plastic Industrial Pallet



Technical Drawings



Nelson™

The Nelson Company

(443) 649-5294

plastic@NelsonCompany.com

www.NelsonCompany.com

www.NelsonTechCenter.com

Tech Sheet Generated On: 6/3/2024

Specs subject to change without notice. Provided for informational purposes only. Technical data are guideline values and may vary based on intended use, features, raw materials and environment. Nothing shall be construed as warranties or guarantees, express or implied, regarding products or their use, application, performance or otherwise.