

CPP400/PE

43x43 (Square) Plastic Container Pallet



Technical Data

Dimensions 43.3x43.3x5.5 inches (1100x1100x140 mm)
Weight 23.0 lbs

Load Capacities

Static 8800 lbs
Dynamic 3300 lbs
Racking --

Entry 4-way
Truckload Qty 1260
Stack TL 45

TL (truckload) quantities are approximate and may vary by transport equipment or other factors.

Handling Data

Nestable Yes	Reusability One-Way & Multi-Trip	ISPM-15 Exempt Yes
Stackable No	Destination Captive & Export	Food Grade Yes, non-FDA
Rackable No	Airfreight Yes	Pharmaceutical Yes

Materials and Colors

Condition
New

Material HDPE/PP (Recycled) HDPE/PP (Virgin*)	Color Black Gray/Custom*
--	---------------------------------------

(High-Density Polyethylene/Polypropylene)

*Custom colors and markings available in virgin material.
(Minimum quantities required.)

Deck Specs

Top Deck
Open

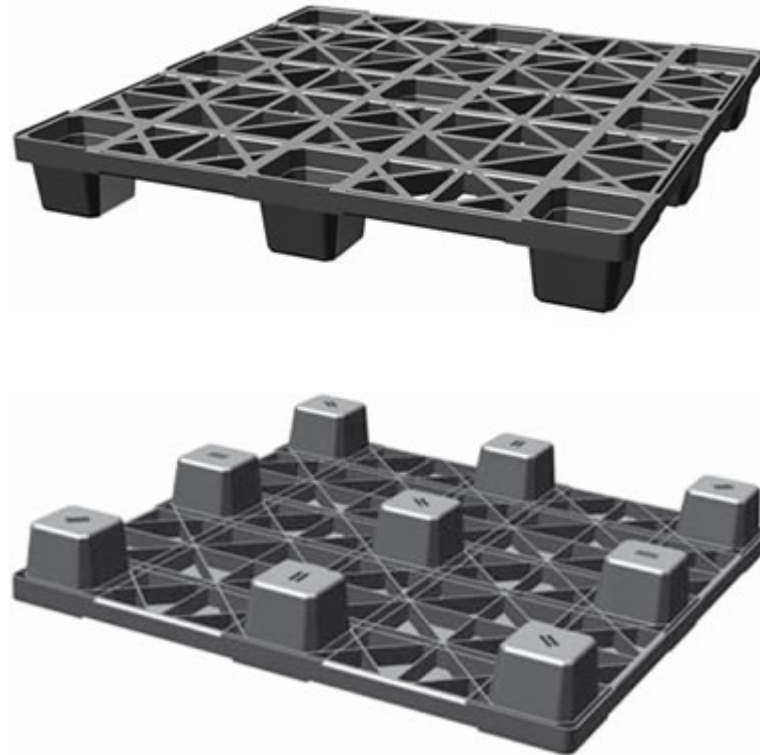
Bottom Deck
9 Feet - Nesting

Available Options:
Open Top = CPP40#
Closed Top = CPP40#-C

CPP400 - No skids (nestable)
CPP406 - 6 Runner snap-on skids*
*Order with skids off for lower shipping cost

Features

- Nesting saves storage & shipping costs
- Cubes out shipping container to save costs
- Designed for Super Sack® and drum loads
- Easy-to-clean hygienic design
- Suitable for packaged food items
(not approved for direct food contact)
- Impervious to acids, fats, solvents and odors
- Resists water absorption & bacteria growth
- Inert to infestation, mold and mildew
- Consistently dimensionally accurate
- Exempt from ISPM 15 shipping regulations



Nelson™

The Nelson Company

(443) 649-5294

plastic@NelsonCompany.com

www.NelsonCompany.com

www.NelsonTechCenter.com