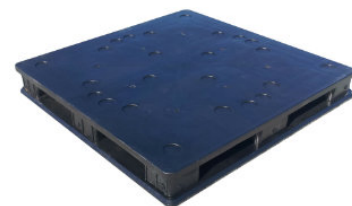


SQ4848-RRB

48x48 (Square) Plastic Industrial Pallet



Technical Data

Dimensions 48x48x6.25 inches
Weight 50.7 lbs

Load Capacities

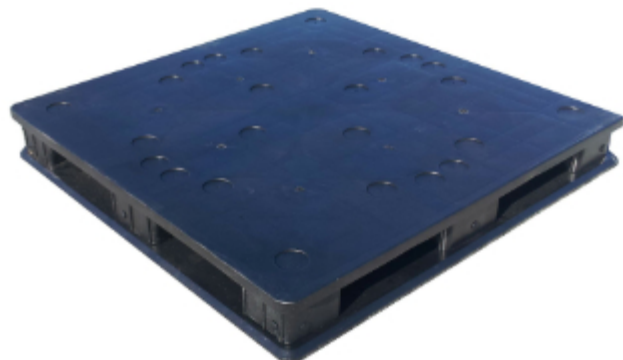
Static 20000 lbs
Dynamic 4000 lbs
Racking 2200 lbs

Entry 4-way
Truckload Qty 416
Stack TL / LTL 16 / 15

TL (truckload) and LTL (less-than-truckload) quantities are approximate and may vary by transport equipment or other factors.

Handling Data

| | | |
|-------------------------|----------------------------------|-----------------------------------|
| Nestable No | Reusability Multi-Trip | ISPM-15 Exempt Yes |
| Stackable Yes | Destination Captive | Food Grade Yes, non-FDA |
| Rackable Yes | Airfreight No | Pharmaceutical Yes |



Materials and Colors

Condition
New

Material
HDPE (Recycled)

Color
Black

Deck Specs

Top Deck
Closed

Bottom Deck
6 Runner - Perimeter+2 Cross
(cruciform perimeter base)

Available Options:
SQ4848-RR - 9 Block bottom deck
SQ4848-RRB - Cruciform perimeter base

Features

- Allows for safe double stacking
- Easy-to-clean hygienic design
- Suitable for packaged food items
(*not approved for direct food contact*)
- Impervious to acids, fats, solvents and odors
- Resists water absorption & bacteria growth
- Inert to infestation, mold and mildew
- Consistently dimensionally accurate
- Exempt from ISPM 15 shipping regulations

NelsonTM

The Nelson Company
(443) 649-5294

plastic@NelsonCompany.com

www.NelsonCompany.com

www.NelsonTechCenter.com