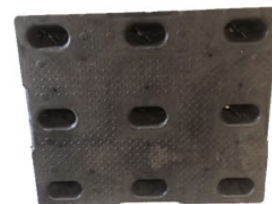


UP-4840-N-ORTRN2

48x40 (Standard) Plastic Industrial Pallet



Technical Data

Dimensions 48x40x6 inches
Weight 37 lbs

Load Capacities

Static 30000 lbs
Dynamic 4000 lbs
Racking --

Entry 4-way
Truckload Qty 1200
Stack TL 40

Load capacities for used pallets may be unavailable or may have changed since issued. Unit load Sample Tests (ST) are recommended to confirm successful use with specific applications and equipment. TL (truckload) quantities are approximate and may vary by transport equipment or other factors.

Handling Data

Nestable Yes	Reusability One-Way & Multi-Trip	ISPM-15 Exempt Yes
Stackable No	Destination Captive & Export	Food Grade Yes, non-FDA
Rackable No	Airfreight Yes	Pharmaceutical Yes

Materials and Colors

Condition
Used

Material HDPE
Color Varies

(High-Density Polyethylene)

Colors and manufacturers vary and orders may be mixed. To avoid return freight charges ask your Sales Rep about special requests. All used pallets have been inspected and cleaned. Pallets may have limited cosmetic damage, but all are structurally sound.

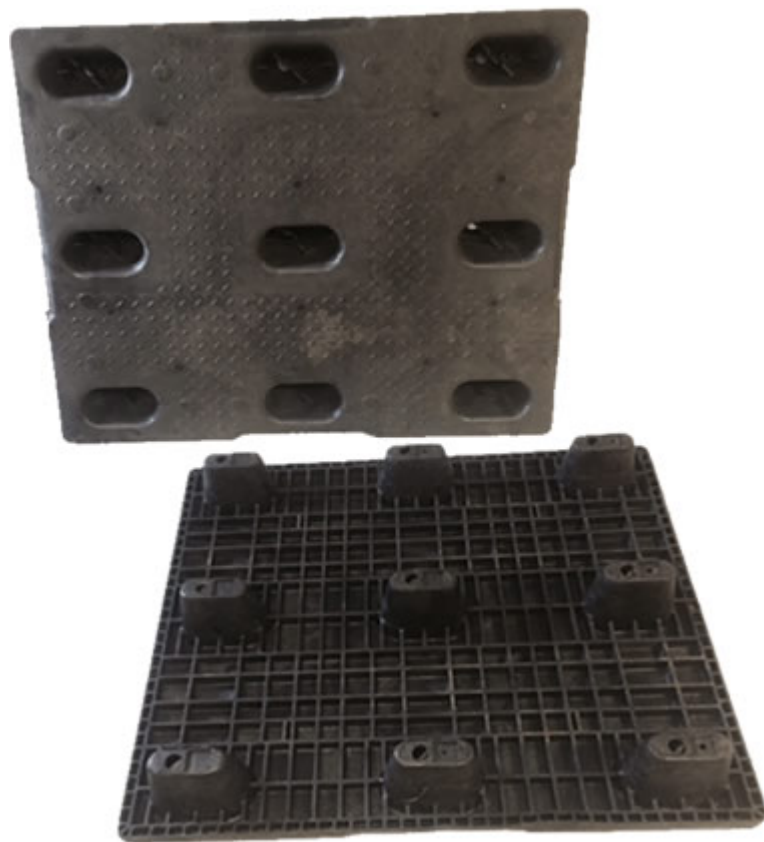
Deck Specs

Top Deck
Closed

Bottom Deck
9 Feet - Nesting

Features

- Nesting saves storage & shipping costs
- Easy-to-clean hygienic design
- Suitable for packaged food items
(not approved for direct food contact)
- Impervious to acids, fats, solvents and odors
- Resists water absorption & bacteria growth
- Inert to infestation, mold and mildew
- Consistently dimensionally accurate
- Exempt from ISPM 15 shipping regulations



NelsonTM

The Nelson Company
(443) 649-5294

plastic@NelsonCompany.com

www.NelsonCompany.com

www.NelsonTechCenter.com