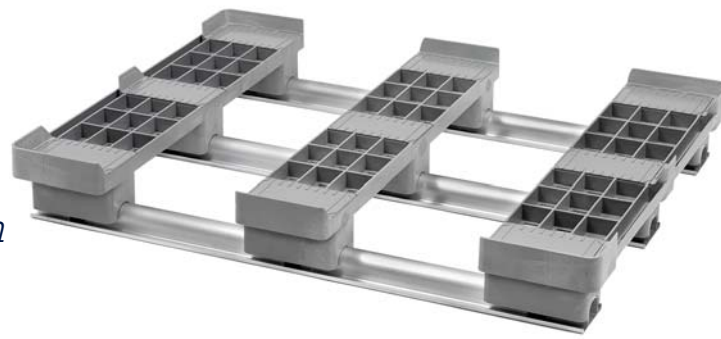


# CABKA-Shuttle | 48 x 40



*The solution for storage and transportation in automated high racking systems.*

## Technical Data

Dimensions* <sup>1</sup>	48.0 x 40.0 x 5.5 in	1219 x 1016 x 140 mm
Weight* <sup>1</sup>	ACM —   PE/PP 33.0 lbs	ACM —   PE/PP 15.0 kg
Load capacities* <sup>2</sup>		
Static	22000 lbs	10000 kg
Dynamic	2800 - 4400 lbs	1250 - 2000 kg
Racking	2800 lbs	1250 kg
Bottom support	3 bottom skids	
Entry	2-way	
Safety rim	1.2 in	30 mm
Nesting height	—	

\*<sup>1</sup> The pallet dimensions and weight are variable. \*<sup>2</sup> Guideline values are based both on experience and parts of test ISO 8611, which tests with evenly distributed loads at room temperature (20°C). Varying data may result from different conditions of usage. Your specific requirements can be identified upon request. \*<sup>3</sup> Minimum quantity required. - We reserve the right to change any of the stated information without prior notice.

## Options

Material	Color
ACM, recycled material	not available
PE, recycled material	not available
PE, virgin material	grey

Individual marking\*<sup>3</sup>  
Custom-made color (only virgin material)\*<sup>3</sup>

## Features

- > Pallets of different types and sizes can be conveyed and stored within the same system.
- > The CABKA-Shuttle carries the load in high racks and allows the usage of pallets that generally aren't rackable.
- > The CABKA-Shuttle allows every pallet to be transported on conveyor technique.
- > Process reliability: No interferences caused by damaged pallets
- > Pivot-mounted aluminum beams cause a special running smoothness

*By the use of the CABKA-Shuttle not only heavy and rackable pallets...*



*...but also lightweight and nestable plastic pallets can be transported and stored in automated high racking systems.*



*The light weight plastic chassis rests in three wear-resistant and bend-proof aluminum beams.*



**CABKA**

**The Nelson Company**

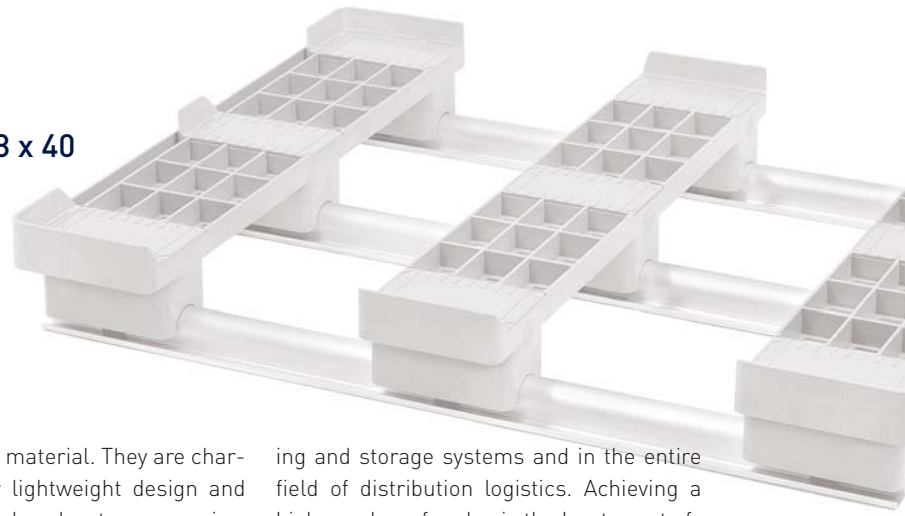
phone +1410.477.3000, x. 118

fax +1410.477.3577

e-mail [service@nelsoncompany.com](mailto:service@nelsoncompany.com)

[www.nelsoncompany.com](http://www.nelsoncompany.com)

# CABKA-Shuttle | 48 x 40



## CPP Plastic Pallets

### Export pallets

Our Send & Forget™ export pallets enable us to offer a solution to export-oriented companies which is both economically efficient and environmentally friendly. Increasingly integrated international commodity flows call for plastic pallets which provide a high added value to customers while meeting high environmental standards more than ever before.

Our export pallets are made using a spe-

cific recycled ACM material. They are characterized by their lightweight design and by their particularly advantageous price. Obviously, nobody would want to invest a high amount of money in load carriers especially when exporting goods.

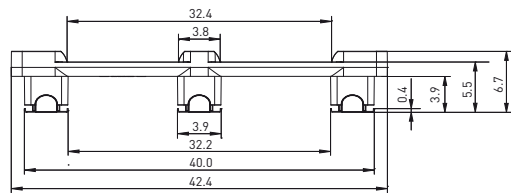
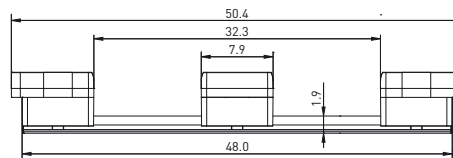
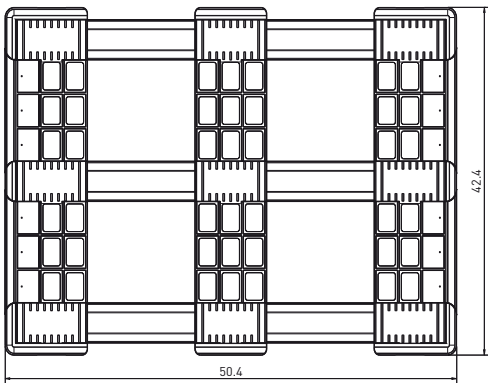
### Logistic pallets

Our logistic pallets are sturdy long-life storage aids which have stood the test in high-bay warehouses, automated convey-

ing and storage systems and in the entire field of distribution logistics. Achieving a high number of cycles is the key to cost efficiency in this area.

Depending on the needs of every application, CABKA logistics pallets are manufactured using either type-specific PE recycled material or virgin material. In most cases, our recycled plastic material will provide an alternative which is both economically efficient and environmentally sound.

## Technical Drawing



nominal sizes in inches

