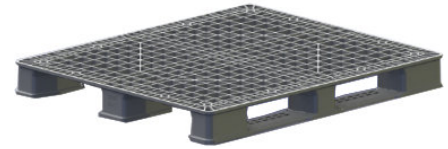


NPP-4840-3R-PSG5.1

48x40 (Standard) Plastic Industrial Pallet



Technical Data

Dimensions 48x40x5.13 inches (1219x1016x130 mm)
Weight 33.5 lbs

Load Capacities

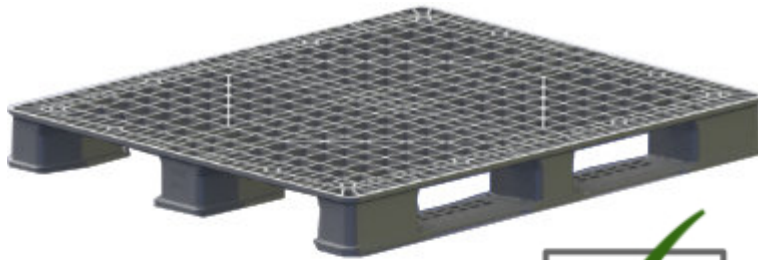
Static 20000 lbs
Dynamic 4000 lbs
Racking --

Entry 4-way
Truckload Qty 600
Stack TL 20

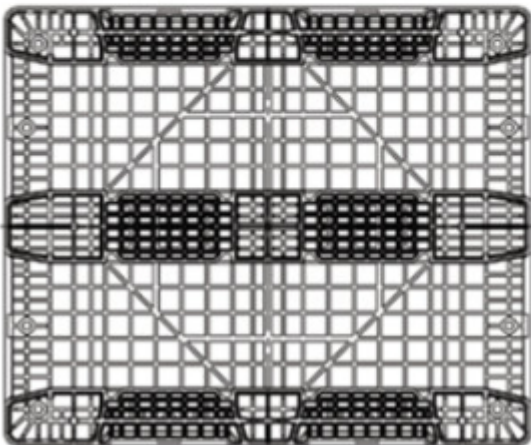
TL (truckload) quantities are approximate and may vary by transport equipment or other factors.

Handling Data

| | | |
|-------------------------|----------------------------------|-----------------------------------|
| Nestable No | Reusability Multi-Trip | ISPM-15 Exempt Yes |
| Stackable Yes | Destination Captive | Food Grade Yes, non-FDA |
| Rackable -- | Airfreight Yes | Pharmaceutical Yes |



Bottom View



Materials and Colors

Condition
New

Material HDPE
Color Blue, Gray, Black (and others)

(Virgin High-Density Polyethylene)

Deck Specs

Top Deck
Open

Bottom Deck
3 Runner - Unidirectional Long Side

Also available with full perimeter bottom

Special Order Options:
Fire Retardant FM Approved non-deca BDE
Anti-microbial additive
Individual Markings
Anti-Slip Grommets

Features

Ideal for closed loops or distribution chains across industry sectors including Food, Retail, Medical and Pharmaceutical.

- 4,000 lbs Racking capacity in supported racks
- Low profile pallet allows for more product or box height
- One-piece design
- Hygienic, flow-through design
- Allows for safe double stacking
- Easy-to-clean hygienic design
- Suitable for packaged food items
(not approved for direct food contact)
- Impervious to acids, fats, solvents and odors
- Resists water absorption & bacteria growth
- Inert to infestation, mold and mildew
- Consistently dimensionally accurate
- Exempt from ISPM 15 shipping regulations

NelsonTM

The Nelson Company

(443) 649-5294

plastic@NelsonCompany.com

www.NelsonCompany.com

www.NelsonTechCenter.com