

CPP320-C/ACM

48x40 (Standard) Plastic Industrial Pallet



Technical Data

Dimensions 48x40x5.5 inches (1219x1016x140 mm)
Weight 23.0 lbs

Load Capacities

Static 8800 lbs
Dynamic 2800 lbs
Racking --

Entry 4-way
Truckload Qty 1800
Stack TL 60

TL (truckload) quantities are approximate and may vary by transport equipment or other factors.

Handling Data

Nestable Yes	Reusability One-Way	ISPM-15 Exempt Yes
Stackable No	Destination Export	Food Grade Yes, non-FDA
Rackable No	Airfreight Yes	Pharmaceutical Yes

Materials and Colors

Condition
New

Material
ACM (Recycled)

Color
Black

Deck Specs

Top Deck
Closed

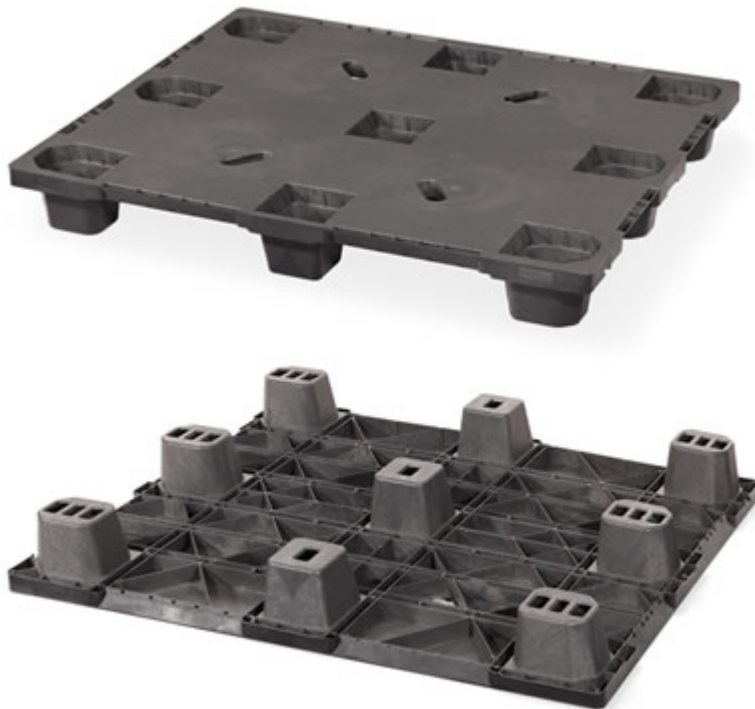
Bottom Deck
9 Feet - Nesting

Available Options:
Open Top = CPP32#
Closed Top = CPP32#-C

CPP320 - No skids (nestable)
CPP323 - 3 Runner snap-on skids*
CPP326 - 6 Runner snap-on skids*
*Order with skids off for lower shipping cost

Features

- 13% more per stack (60 vs 52): less floor space, more in a truckload = less inbound freight
- Angled sides for easier fork time access when splitting the stack
- Notch on the side for stretch wrap hook
- New handle cut into the top deck for easier handling
- Nesting saves storage & shipping costs
- Low-cost Plastic Pallet
- Easy-to-clean hygienic design
- Suitable for packaged food items (*not approved for direct food contact*)
- Impervious to acids, fats, solvents and odors
- Resists water absorption & bacteria growth
- Inert to infestation, mold and mildew
- Consistently dimensionally accurate
- Exempt from ISPM 15 shipping regulations



NelsonTM

The Nelson Company

(443) 649-5294

plastic@NelsonCompany.com

www.NelsonCompany.com

www.NelsonTechCenter.com