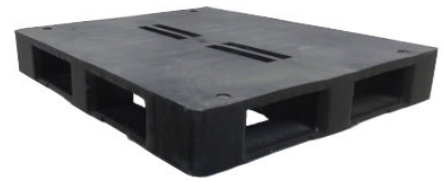


UP-1210-FP-CD50lbs

48x40 (Standard) Plastic Industrial Pallet



Technical Data

| | |
|------------------------|-----------------------------------------|
| Dimensions | 47.2x39.4x5.9 inches (1200x1000x150 mm) |
| Weight | 50 lbs |
| Load Capacities | |
| Static | 10000 lbs |
| Dynamic | 2500 lbs |
| Racking | 2000 lbs |
| Entry | 4-way |
| Truckload Qty | 480 |
| Stack TL / LTL | -- / 16 |

Load capacities for used pallets may be unavailable or may have changed since issued. Unit load Sample Tests (ST) are recommended to confirm successful use with specific applications and equipment. TL (truckload) and LTL (less-than-truckload) quantities are approximate and may vary by transport equipment or other factors.

Handling Data

| | | |
|-------------------------|--------------------------------------------|-----------------------------------|
| Nestable No | Reusability One-Way & Multi-Trip | ISPM-15 Exempt Yes |
| Stackable Yes | Destination Captive & Export | Food Grade Yes, non-FDA |
| Rackable Yes | Airfreight No | Pharmaceutical Yes |



Materials and Colors

Condition
Used

Material
HDPE

Color
Varies

(High-Density Polyethylene)

Colors and manufacturers vary and orders may be mixed. To avoid return freight charges ask your Sales Rep about special requests. All used pallets have been inspected and cleaned. Pallets may have limited cosmetic damage, but all are structurally sound.

Deck Specs

Top Deck
Closed

Bottom Deck
5 Runner - Perimeter+1 Long Side

Features

Mixed lot of mostly black

- Allows for safe double stacking
- Easy-to-clean hygienic design
- Suitable for packaged food items
(not approved for direct food contact)
- Impervious to acids, fats, solvents and odors
- Resists water absorption & bacteria growth
- Inert to infestation, mold and mildew
- Consistently dimensionally accurate
- Exempt from ISPM 15 shipping regulations

NelsonTM

The Nelson Company

(443) 649-5294

plastic@NelsonCompany.com

www.NelsonCompany.com

www.NelsonTechCenter.com