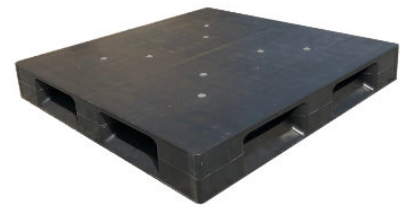


UP-1111-FP-NPC-CD351b

43x43 (Square) Plastic Container Pallet



Technical Data

Dimensions 43.3x43.3x6 inches (1100x1100x150 mm)
Weight 35.0 lbs

Load Capacities

Static 7200 lbs
Dynamic 2400 lbs
Racking ST Req

Entry 4-way
Truckload Qty 448
Stack TL / LTL -- / 16

Load capacities for used pallets may be unavailable or may have changed since issued. Unit load Sample Tests (ST) are recommended to confirm successful use with specific applications and equipment. TL (truckload) and LTL (less-than-truckload) quantities are approximate and may vary by transport equipment or other factors.

Handling Data

Nestable No	Reusability One-Way & Multi-Trip	ISPM-15 Exempt Yes
Stackable Yes	Destination Captive & Export	Food Grade Yes, non-FDA
Rackable Yes	Airfreight Yes	Pharmaceutical Yes



Materials and Colors

Condition
Used

Material HDPE/PP
Color Varies

(High-Density Polyethylene / Polypropylene)

Colors and manufacturers vary and orders may be mixed. To avoid return freight charges ask your Sales Rep about special requests. All used pallets have been inspected and cleaned. Pallets may have limited cosmetic damage, but all are structurally sound.

Deck Specs

Top Deck
Closed

Bottom Deck
6 Runner - Perimeter+2 Cross
(cruciform perimeter base)

Features

- Anti-slip Grommets on the closed deck
- Allows for safe double stacking
- Cubes out shipping container to save costs
- Designed for Super Sack® and drum loads
- Easy-to-clean hygienic design
- Suitable for packaged food items
(*not approved for direct food contact*)
- Impervious to acids, fats, solvents and odors
- Resists water absorption & bacteria growth
- Inert to infestation, mold and mildew
- Consistently dimensionally accurate
- Exempt from ISPM 15 shipping regulations

Nelson™

The Nelson Company

(443) 649-5294

plastic@NelsonCompany.com

www.NelsonCompany.com

www.NelsonTechCenter.com