

CT-4840-N-ExpCD-C

48x40 (Standard) Plastic Industrial Pallet



Technical Data

Dimensions 48x40x5 inches (1219x1016x127 mm)
Weight 20.0 lbs

Load Capacities

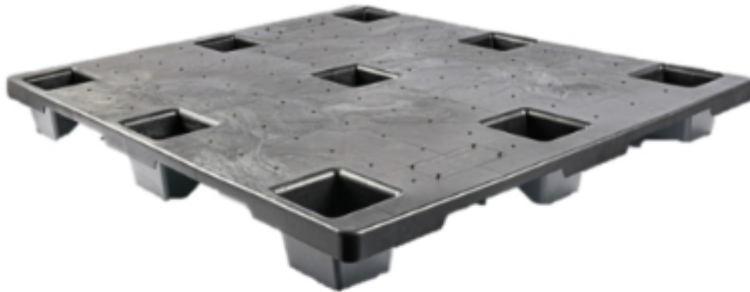
Static 2200 lbs
Dynamic 1200 lbs
Racking --

Entry 4-way
Truckload Qty 1500
Stack TL 50

TL (truckload) quantities are approximate and may vary by transport equipment or other factors.

Handling Data

Nestable Yes	Reusability One-Way & Multi-Trip	ISPM-15 Exempt Yes
Stackable --	Destination Captive & Export	Food Grade Yes, non-FDA
Rackable No	Airfreight Yes	Pharmaceutical Yes



Materials and Colors

Condition
New

Material
HDPE/PP (Recycled)

Color
Black / Gray

(Economical C-Grade)

Deck Specs

Top Deck
Closed

Bottom Deck
9 Feet - Nesting

Available Options:
3 Runners (adds 3 lbs)
Durable B-Grade Material

Features

Economical C-Grade material blend does not include colorant and may result in varied pallet colors. Material formulation also has no impact modifiers resulting in a rigid pallet.

- Nesting saves storage & shipping costs
- Easy-to-clean hygienic design
- Suitable for packaged food items
(not approved for direct food contact)
- Impervious to acids, fats, solvents and odors
- Resists water absorption & bacteria growth
- Inert to infestation, mold and mildew
- Consistently dimensionally accurate
- Exempt from ISPM 15 shipping regulations

Nelson™

The Nelson Company

(443) 649-5294

plastic@NelsonCompany.com

www.NelsonCompany.com

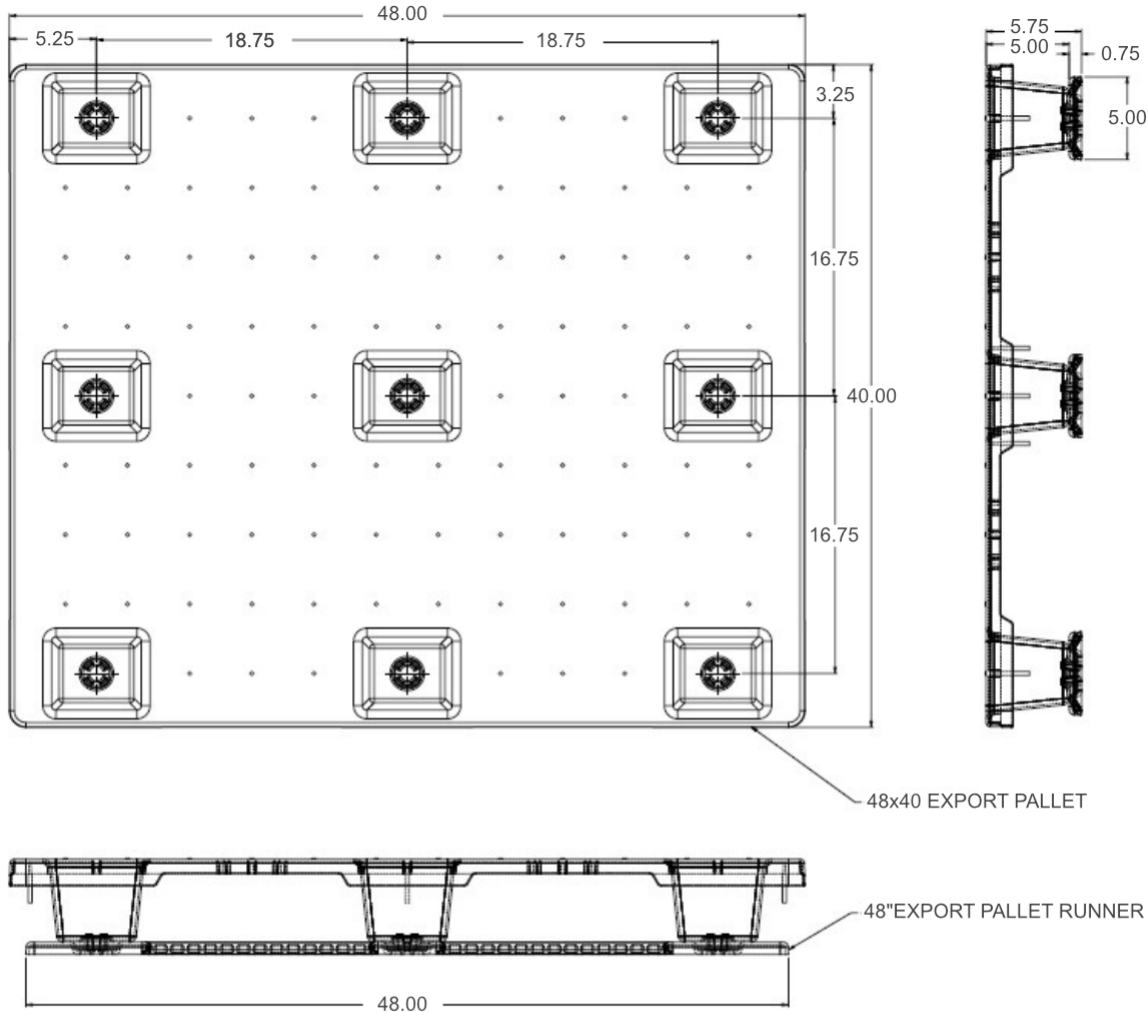
www.NelsonTechCenter.com

CT-4840-N-ExpCD-C

48x40 (Standard)
Plastic Industrial Pallet



Technical Drawings



NelsonTM

The Nelson Company

(443) 649-5294

plastic@NelsonCompany.com

www.NelsonCompany.com

www.NelsonTechCenter.com

Tech Sheet Generated On: 6/1/2024

Specs subject to change without notice. Provided for informational purposes only. Technical data are guideline values and may vary based on intended use, features, raw materials and environment. Nothing shall be construed as warranties or guarantees, express or implied, regarding products or their use, application, performance or otherwise.