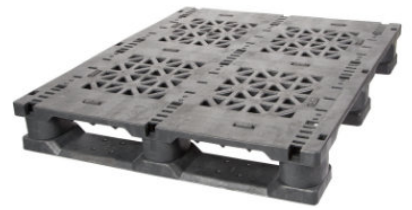


# GL-4032-3R-140mm36lbs

40x32

Plastic Beverage Pallet



## Technical Data

Dimensions 40x32x5.5 inches (1016x813x140 mm)  
Weight 36.0 lbs

### Load Capacities

Static 30000 lbs  
Dynamic 5000 lbs  
Racking 1000 lbs

Entry 4-way  
Truckload Qty 810  
Stack TL 18

TL (truckload) quantities are approximate and may vary by transport equipment or other factors.

## Handling Data

<b>Nestable</b> No	<b>Reusability</b> Multi-Trip	<b>ISPM-15 Exempt</b> Yes
<b>Stackable</b> Yes	<b>Destination</b> Captive	<b>Food Grade</b> Yes, non-FDA
<b>Rackable</b> Yes	<b>Airfreight</b> Yes	<b>Pharmaceutical</b> Yes

## Materials and Colors

**Condition**  
New

**Material**  
HDPE (Recycled)

**Color**  
Gray

(High-Density Polyethylene)

## Deck Specs

**Top Deck**  
Open

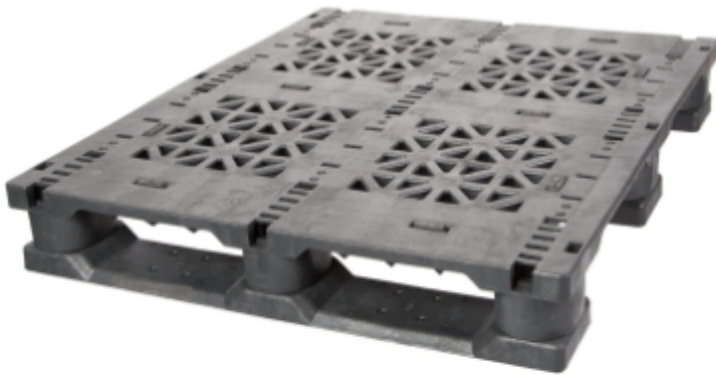
**Bottom Deck**  
3 Runner - Unidirectional Long Side

**Available Options:**  
Rod Inserts (3)

## Features

Specifically designed for the beverage industry.

- Allows for safe double stacking
- Easy-to-clean hygienic design
- Suitable for packaged food items  
(not approved for direct food contact)
- Impervious to acids, fats, solvents and odors
- Resists water absorption & bacteria growth
- Inert to infestation, mold and mildew
- Consistently dimensionally accurate
- Exempt from ISPM 15 shipping regulations



**Nelson**<sup>TM</sup>

The Nelson Company

(443) 649-5294

[plastic@NelsonCompany.com](mailto:plastic@NelsonCompany.com)

[www.NelsonCompany.com](http://www.NelsonCompany.com)

[www.NelsonTechCenter.com](http://www.NelsonTechCenter.com)