

# ORC-4840-FP-P3H5.1

## 48x40 (Standard) Plastic Industrial Pallet



### Technical Data

Dimensions 48x40x5.1 inches  
Weight 30.0 lbs

#### Load Capacities

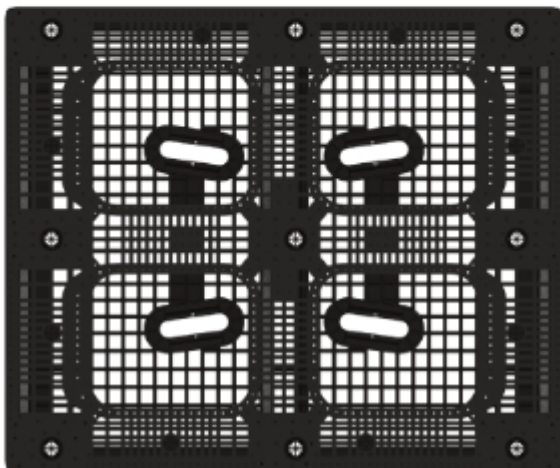
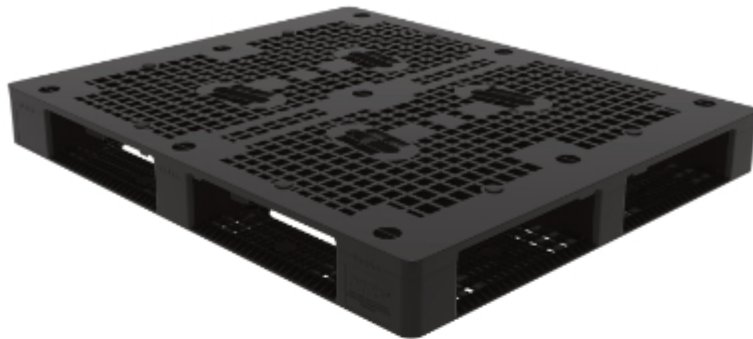
Static 30000 lbs  
Dynamic 3000 lbs  
Racking ST Req

Entry 4-way  
Truckload Qty 600  
Stack TL 20

Unit load Sample Tests (ST) are recommended to confirm successful use with specific applications and equipment. TL (truckload) quantities are approximate and may vary by transport equipment or other factors.

### Handling Data

<b>Nestable</b> No	<b>Reusability</b> Multi-Trip	<b>ISPM-15 Exempt</b> Yes
<b>Stackable</b> Yes	<b>Destination</b> Captive & Export	<b>Food Grade</b> Yes, non-FDA
<b>Rackable</b> Yes	<b>Airfreight</b> Yes	<b>Pharmaceutical</b> Yes



### Materials and Colors

**Condition**  
New

**Material**  
HDPP (Recycled)  
HDPP (Virgin\*)

**Color**  
Black  
Gray/Custom\*

(High-Density Polypropylene)

\*Custom colors and markings available in virgin material. (Minimum quantities required.)

### Deck Specs

#### Top Deck

Open  
**Options**  
Grommets

#### Bottom Deck

6 Runner - Perimeter+2 Cross  
(cruciform perimeter base)

### Features

Optional steel reinforcements in 40" direction allow for additional racking strength

- Low profile 5.1" height optimized for double stacking in racks
- Comfortable hand holds for easy manual handling
- Flow-through design reduces contaminant spaces
- Allows for safe double stacking
- Easy-to-clean hygienic design
- Suitable for packaged food items  
(not approved for direct food contact)
- Impervious to acids, fats, solvents and odors
- Resists water absorption & bacteria growth
- Inert to infestation, mold and mildew
- Consistently dimensionally accurate
- Exempt from ISPM 15 shipping regulations

**Nelson**<sup>TM</sup>

The Nelson Company

(443) 649-5294

[plastic@NelsonCompany.com](mailto:plastic@NelsonCompany.com)

[www.NelsonCompany.com](http://www.NelsonCompany.com)

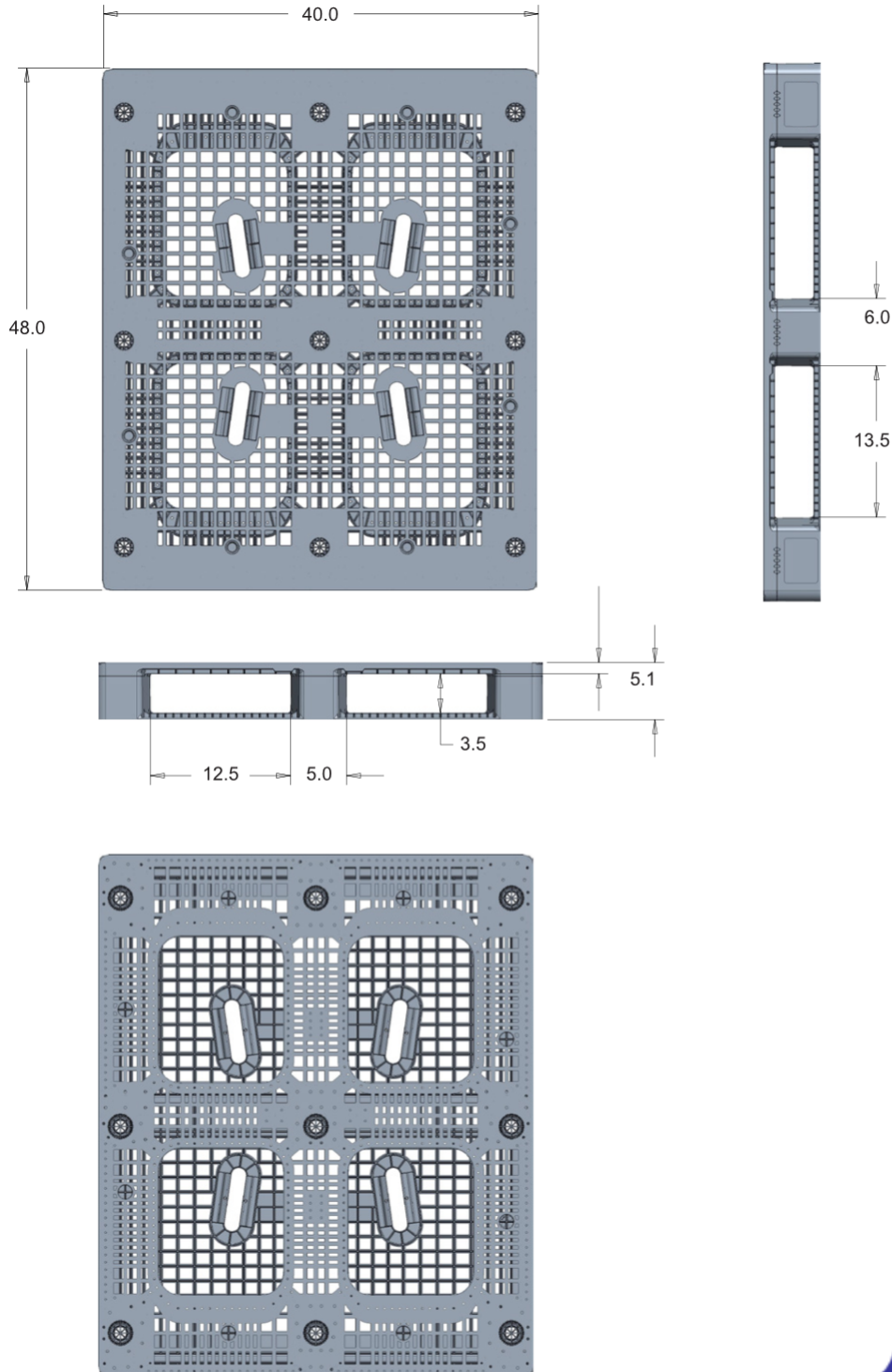
[www.NelsonTechCenter.com](http://www.NelsonTechCenter.com)

# ORC-4840-FP-P3H5.1

48x40 (Standard)  
Plastic Industrial Pallet



## Technical Drawings



**Nelson**<sup>™</sup>

The Nelson Company

(443) 649-5294

[plastic@NelsonCompany.com](mailto:plastic@NelsonCompany.com)

[www.NelsonCompany.com](http://www.NelsonCompany.com)

[www.NelsonTechCenter.com](http://www.NelsonTechCenter.com)

Tech Sheet Generated On: 5/18/2024

Specs subject to change without notice. Provided for informational purposes only. Technical data are guideline values and may vary based on intended use, features, raw materials and environment. Nothing shall be construed as warranties or guarantees, express or implied, regarding products or their use, application, performance or otherwise.