

PG-4832-3R-150mm33lbsCD

48x32 (Euro)

Plastic Industrial Pallet



Technical Data

Dimensions 47.2x31.5x5.9 inches (1200x800x150 mm)
Weight 34.7 lbs

Load Capacities

Static 11023 lbs
Dynamic 3307 lbs
Racking 1543 lbs

Entry 4-way
Truckload Qty 684
Stack TL / LTL 18 / 16

TL (truckload) and LTL (less-than-truckload) quantities are approximate and may vary by transport equipment or other factors.

Handling Data

Nestable No	Reusability One-Way & Multi-Trip	ISPM-15 Exempt Yes
Stackable Yes	Destination Captive & Export	Food Grade Yes, non-FDA
Rackable Yes	Airfreight Yes	Pharmaceutical Yes

Materials and Colors

Condition
New

Material HDPP (Recycled) **Color** Black/Gray

(High-Density Polypropylene)

Deck Specs

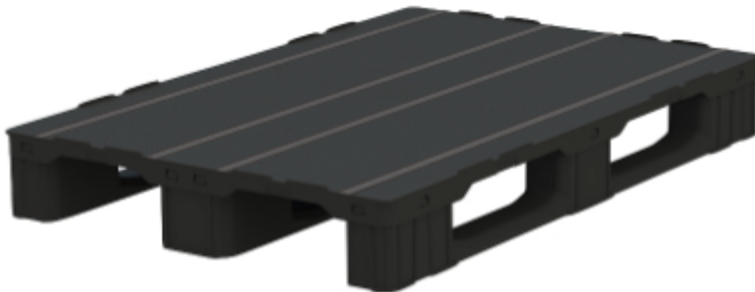
Top Deck
Closed

Bottom Deck
3 Runner - Unidirectional Long Side

Available Options:
PG-4832-3R-150mm33lbs - Open Deck
Safety Rims
Rubber and anti-slip gems / strips
GPS/IOT Tracking Device

Features

- Optimized to fit conveyors and automated systems
- Standard size used across EU
- Design is popular in rail freight applications
- Allows for safe double stacking
- Easy-to-clean hygienic design
- Suitable for packaged food items
(*not approved for direct food contact*)
- Impervious to acids, fats, solvents and odors
- Resists water absorption & bacteria growth
- Inert to infestation, mold and mildew
- Consistently dimensionally accurate
- Exempt from ISPM 15 shipping regulations



NelsonTM

The Nelson Company

(443) 649-5294

plastic@NelsonCompany.com

www.NelsonCompany.com

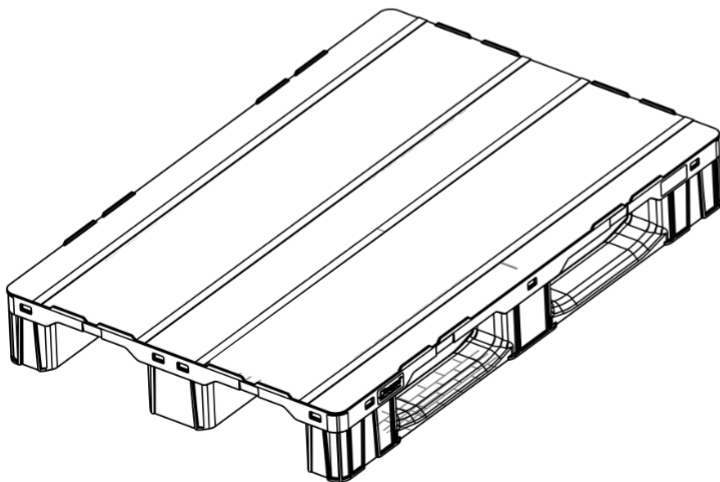
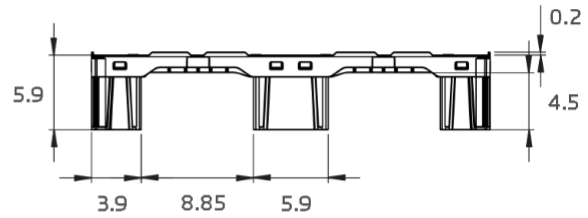
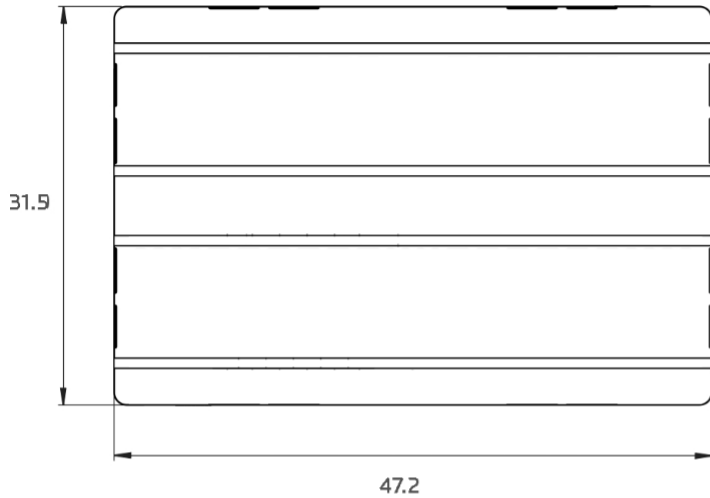
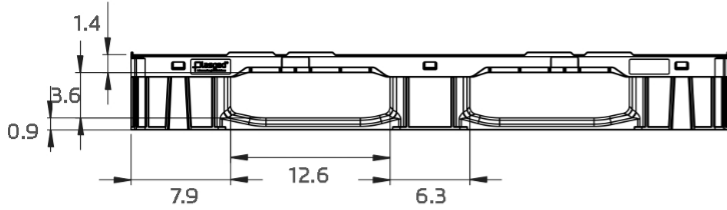
www.NelsonTechCenter.com

PG-4832-3R-150mm33lbsCD

48x32 (Euro)
Plastic Industrial Pallet



Technical Drawings



NelsonTM

The Nelson Company

(443) 649-5294

plastic@NelsonCompany.com

www.NelsonCompany.com

www.NelsonTechCenter.com