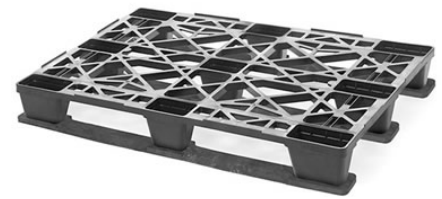


UP-1280-3R-213PE

48x32 (Euro)

Plastic Industrial Pallet



Technical Data

Dimensions 47.2x31.5x5.9 inches (1200x800x150 mm)
Weight 26 lbs

Load Capacities

Static 14100 lbs
Dynamic 3500 lbs
Racking 1100 lbs

Entry 4-way
Truckload Qty 624
Stack TL / LTL -- / 16

Load capacities for used pallets may be unavailable or may have changed since issued. Unit load Sample Tests (ST) are recommended to confirm successful use with specific applications and equipment. TL (truckload) and LTL (less-than-truckload) quantities are approximate and may vary by transport equipment or other factors.

Handling Data

Nestable No	Reusability One-Way & Multi-Trip	ISPM-15 Exempt Yes
Stackable Yes	Destination Captive & Export	Food Grade Yes, non-FDA
Rackable Yes	Airfreight Yes	Pharmaceutical Yes



New product image shown for illustrative purposes only.
Actual product is in used condition.

Materials and Colors

Condition
Used

Material
HDPE/PP (Recycled)

Color
Varies

(High-Density Polyethylene/Polypropylene)

Colors and manufacturers vary and orders may be mixed. To avoid return freight charges ask your Sales Rep about special requests. All used pallets have been inspected and cleaned. Pallets may have limited cosmetic damage, but all are structurally sound.

Deck Specs

Top Deck
Open

Bottom Deck
3 Runner - Unidirectional Long Side

Snap-on skids already installed

Features

- Standard size used across EU
- Design is popular in rail freight applications
- Allows for safe double stacking
- Easy-to-clean hygienic design
- Suitable for packaged food items
(not approved for direct food contact)
- Impervious to acids, fats, solvents and odors
- Resists water absorption & bacteria growth
- Inert to infestation, mold and mildew
- Consistently dimensionally accurate
- Exempt from ISPM 15 shipping regulations

NelsonTM

The Nelson Company

(443) 649-5294

plastic@NelsonCompany.com

www.NelsonCompany.com

www.NelsonTechCenter.com