

GL-4844-FP-0Rod

48x44

Plastic Industrial Pallet



Technical Data

Dimensions 47.24x43.3x5.8 inches (1100x1200x147 mm)
Weight 65.5 lbs

Load Capacities

Static 30000 lbs
Dynamic 5000 lbs
Racking 1500 lbs

Entry 4-way
Truckload Qty 504
Stack TL / LTL 18 / 16

TL (truckload) and LTL (less-than-truckload) quantities are approximate and may vary by transport equipment or other factors.

Handling Data

Nestable No	Reusability Multi-Trip	ISPM-15 Exempt Yes
Stackable Yes	Destination Captive	Food Grade Yes, non-FDA
Rackable Yes	Airfreight No	Pharmaceutical Yes

Materials and Colors

Condition
New

Material
HDPE/PP (Recycled)

Color
Black

Deck Specs

Top Deck
Open

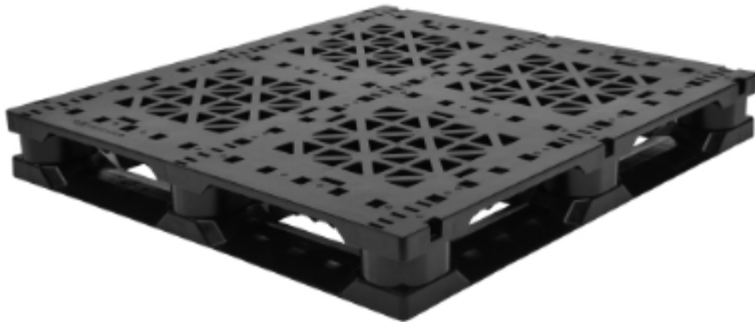
Bottom Deck
6 Runner - Perimeter+2 Cross
(cruciform perimeter base)

Features

Available with Rod Insert Options:

0 Rod
3 Rod (long or short side)
5 Rod

- New sloped runner design
- Allows for safe double stacking
- Easy-to-clean hygienic design
- Suitable for packaged food items
(*not approved for direct food contact*)
- Impervious to acids, fats, solvents and odors
- Resists water absorption & bacteria growth
- Inert to infestation, mold and mildew
- Consistently dimensionally accurate
- Exempt from ISPM 15 shipping regulations



NelsonTM

The Nelson Company
(443) 649-5294

plastic@NelsonCompany.com

www.NelsonCompany.com

www.NelsonTechCenter.com

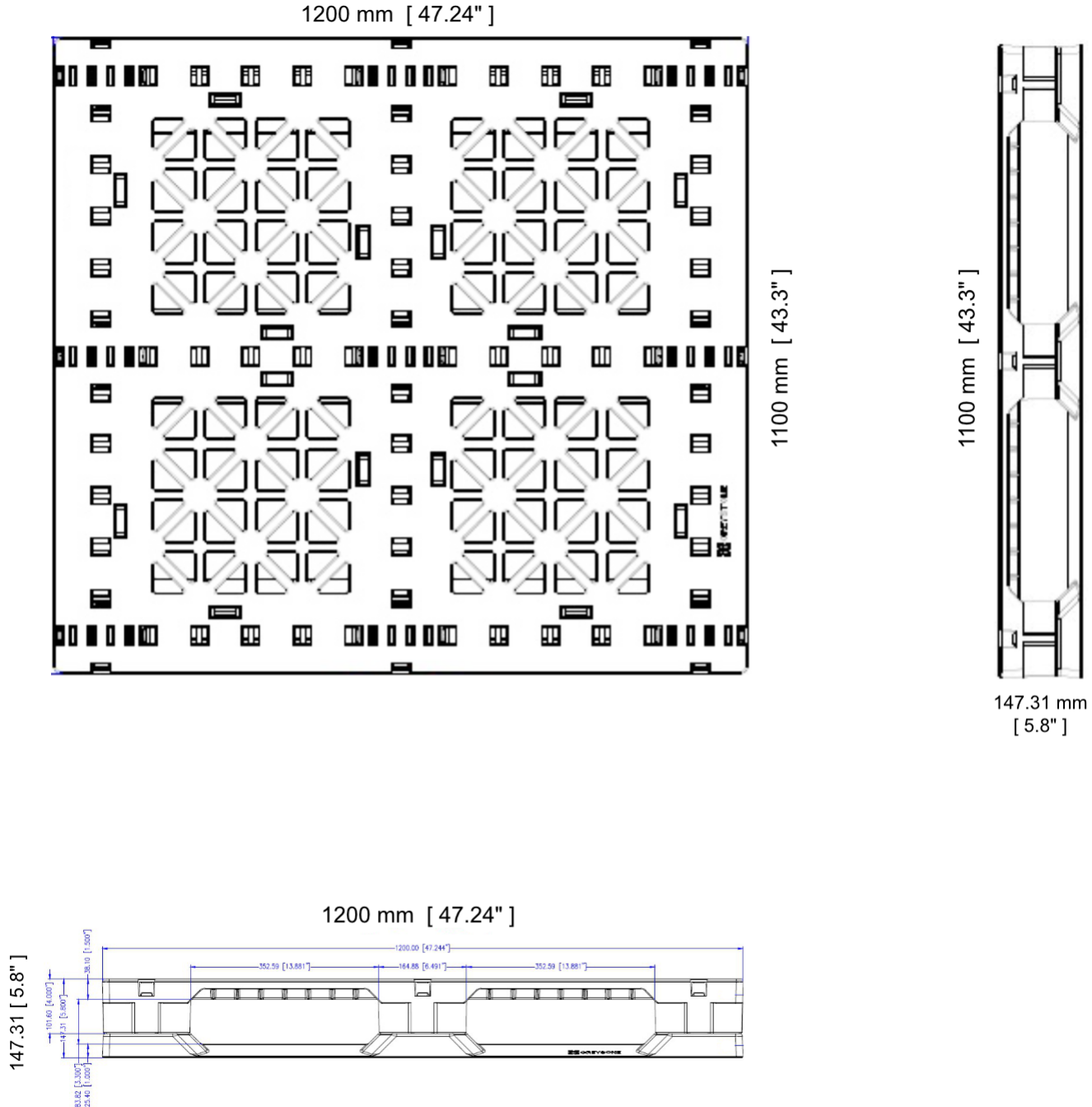
GL-4844-FP-0Rod

48x44

Plastic Industrial Pallet



Technical Drawings



NelsonTM

The Nelson Company
(443) 649-5294

plastic@NelsonCompany.com

www.NelsonCompany.com

www.NelsonTechCenter.com