

PP4840N-Rnest

48x40 (Standard) Plastic Industrial Pallet



Technical Data

Dimensions 48x40x5.75 inches
Weight 34 lbs

Load Capacities

Static 30000 lbs
Dynamic 4000 lbs
Racking --

Entry 4-way
Pallets per Stack 34
Truckload Qty 1020

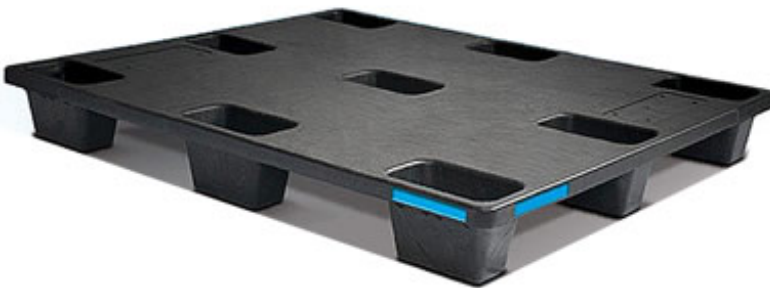
Available in Truckload or LTL quantities. Minimum quantity required. We reserve the right to change any stated information without prior notice. Not responsible for typographical errors.

Handling Data

Nestable Yes
Reusability One-Way & Multi-Trip
ISPM-15 Exempt Yes

Stackable --
Destination Captive & Export
Food Grade Yes, non-FDA

Rackable No
Airfreight Yes
Pharmaceutical Yes



Materials and Colors

Condition
New

Material HDPE (Recycled) **Color** Black

(High-Density Polyethylene)

Deck Specs

Top Deck
Closed

Bottom Deck
9 Feet - Nesting

Available Options:
Colored Side Stripes for easy ID
Embossed Customized Name Plates
Custom In-Mold Side Labeling
Hot Stamping

Features

- Nesting saves storage & shipping costs
- Easy-to-clean hygienic design
- Suitable for packaged food items
(not approved for direct food contact)
- Impervious to acids, fats, solvents and odors
- Resists water absorption & bacteria growth
- Inert to infestation, mold and mildew
- Consistently dimensionally accurate
- Exempt from ISPM 15 shipping regulations

Nelson™

The Nelson Company

(410) 477-3000 x110

plastic@NelsonCompany.com

www.NelsonCompany.com

www.NelsonTechCenter.com