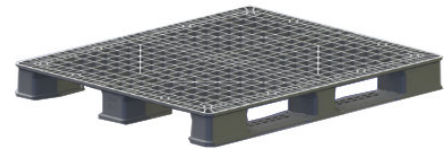


# NPP-4840-3R-PSG5.1

## 48x40 (Standard) Plastic Industrial Pallet



### Technical Data

Dimensions 48x40x5.13 inches (1219x1016x130 mm)  
Weight 33.5 lbs

#### Load Capacities

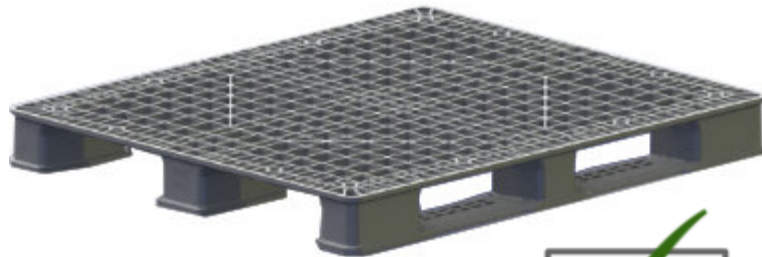
Static 20000 lbs  
Dynamic 4000 lbs  
Racking --

Entry 4-way  
Truckload Qty 600  
Stack TL / LTL 20 / 18

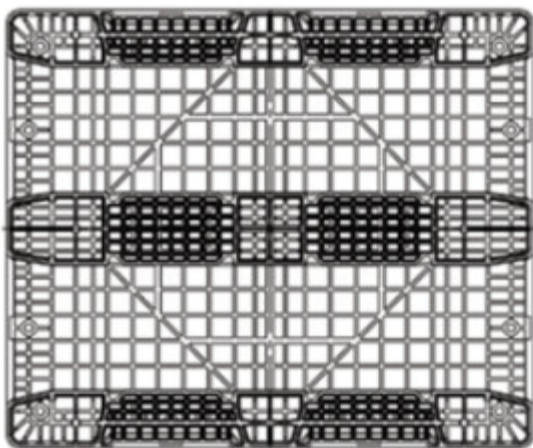
TL (truckload) and LTL (less-than-truckload) quantities are approximate and may vary by transport equipment or other factors.

### Handling Data

<b>Nestable</b> No	<b>Reusability</b> Multi-Trip	<b>ISPM-15 Exempt</b> Yes
<b>Stackable</b> Yes	<b>Destination</b> Captive	<b>Food Grade</b> Yes, non-FDA
<b>Rackable</b> --	<b>Airfreight</b> Yes	<b>Pharmaceutical</b> Yes



Bottom View



### Materials and Colors

**Condition**  
New

**Material** HDPE      **Color** Blue, Gray, Black (and others)

(Virgin High-Density Polyethylene)

### Deck Specs

**Top Deck**  
Open

**Bottom Deck**  
3 Runner - Unidirectional Long Side

Also available with full perimeter bottom

**Special Order Options:**  
Fire Retardant FM Approved non-deca BDE  
Anti-microbial additive  
Individual Markings  
Anti-Slip Grommets

### Features

Ideal for closed loops or distribution chains across industry sectors including Food, Retail, Medical and Pharmaceutical.

- 4,000 lbs Racking capacity in supported racks
- Low profile pallet allows for more product or box height
- One-piece design
- Hygienic, flow-through design
- Allows for safe double stacking
- Easy-to-clean hygienic design
- Suitable for packaged food items  
(not approved for direct food contact)
- Impervious to acids, fats, solvents and odors
- Resists water absorption & bacteria growth
- Inert to infestation, mold and mildew
- Consistently dimensionally accurate
- Exempt from ISPM 15 shipping regulations

**Nelson**<sup>TM</sup>

The Nelson Company

(443) 649-5294

[plastic@NelsonCompany.com](mailto:plastic@NelsonCompany.com)

[www.NelsonCompany.com](http://www.NelsonCompany.com)

[www.NelsonTechCenter.com](http://www.NelsonTechCenter.com)