

NPP-4840-N-RackNest

48x40 (Standard) Plastic Industrial Pallet



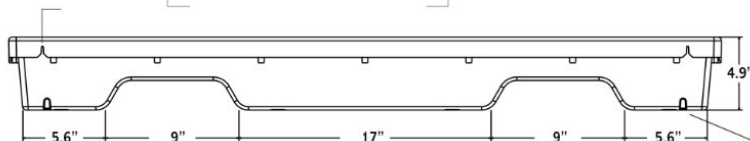
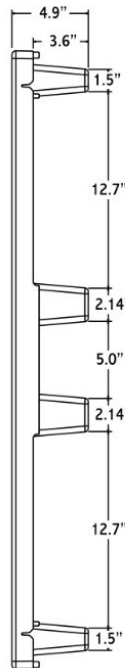
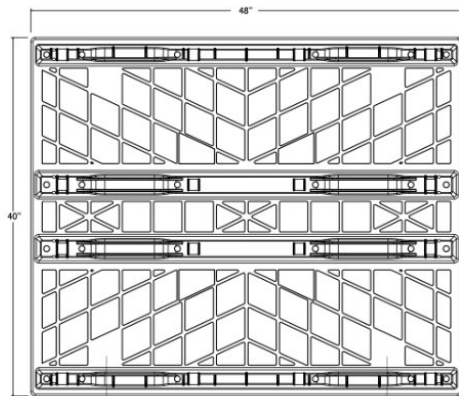
Technical Data

Dimensions	48x40x4.8 inches (1219x1016x122 mm)
Weight	18.0 lbs
Load Capacities	
Static	10500 lbs
Dynamic	3100 lbs
Racking	2700 lbs
Entry	
Entry	4-way
Pallets per Stack	60
Truckload Qty	1800

Available in Truckload or LTL quantities. Minimum quantity required. We reserve the right to change any stated information without prior notice. Not responsible for typographical errors.

Handling Data

Nestable Yes	Reusability One-Way & Multi-Trip	ISPM-15 Exempt Yes
Stackable Yes	Destination Captive & Export	Food Grade Yes, non-FDA
Rackable Yes	Airfreight Yes	Pharmaceutical Yes



Materials and Colors

Condition
New

Material
HDPP (Recycled)

Color
Black-Gray

(High-Density Polypropylene)

Deck Specs

Top Deck
Open

Bottom Deck
4 Runner - Unidirectional Long Side

Design Note:
Runner in 40" direction in development.
Testing Note:
Load Capacities based on box unit load testing at the VT Center for Packaging and Unit Load Design.

Features

Revolutionary Rackable & Nestable Design closely resembles wood pallet. Engineered to look and function like a traditional, wooden stringer pallet.

- Low profile (under 5") great for airfreight
- Automation friendly
- Compatible with most roller conveyors
- Nesting saves storage & shipping costs
- Allows for safe double stacking
- Low-cost Plastic Pallet
- Easy-to-clean hygienic design
- Suitable for packaged food items
(not approved for direct food contact)
- Impervious to acids, fats, solvents and odors
- Resists water absorption & bacteria growth
- Inert to infestation, mold and mildew
- Consistently dimensionally accurate
- Exempt from ISPM 15 shipping regulations

NelsonTM

The Nelson Company

(410) 477-3000 x110

plastic@NelsonCompany.com

www.NelsonCompany.com

www.NelsonTechCenter.com