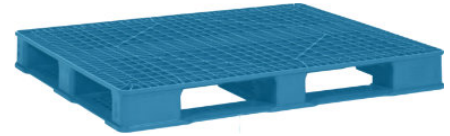


# NPP-4840-FP-PSG5.1FM

## 48x40 (Standard) Plastic Industrial Pallet



### Technical Data

Dimensions 48x40x5.13 inches  
Weight 34 lbs

#### Load Capacities

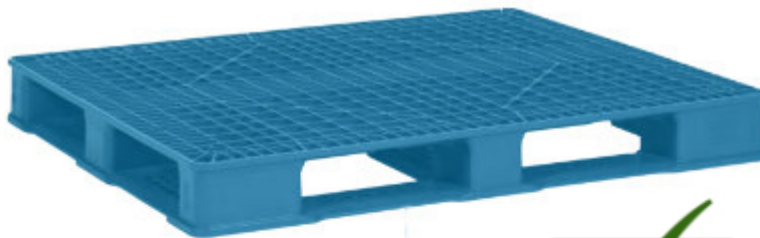
Static 20000 lbs  
Dynamic 4000 lbs  
Racking ST Req

Entry 4-way  
Truckload Qty 600  
Stack TL / LTL 20 / 18

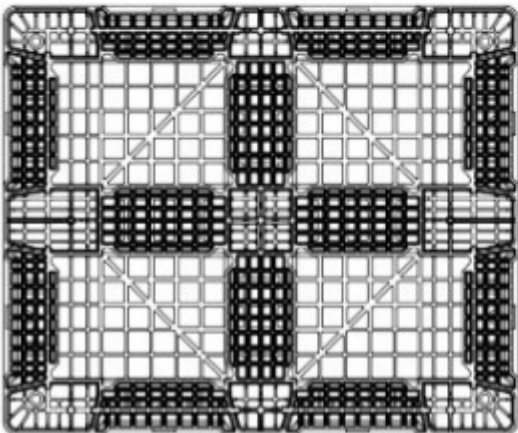
Unit load Sample Tests (ST) are recommended to confirm successful use with specific applications and equipment. TL (truckload) and LTL (less-than-truckload) quantities are approximate and may vary by transport equipment or other factors.

### Handling Data

<b>Nestable</b> No	<b>Reusability</b> Multi-Trip	<b>ISPM-15 Exempt</b> Yes
<b>Stackable</b> Yes	<b>Destination</b> Captive	<b>Food Grade</b> FDA Approved
<b>Rackable</b> Yes	<b>Airfreight</b> No	<b>Pharmaceutical</b> Yes



Bottom View



### Materials and Colors

**Condition**  
New

**Material** HDPE  
**Color** Blue

(High-Density Polyethylene)

### Deck Specs

**Top Deck**  
Open

**Bottom Deck**  
6 Runner - Perimeter+2 Cross  
(cruciform perimeter base)

Full perimeter bottom deck design allows racking.  
Manufacturer load rating = 4,000 lbs in supported rack.

### Features

- Built for safe transportation and storage of pharmaceutical products.
- Meets decaBDE-free fire retardant standards
- FM approved for meeting fire rating requirements.
- Allows for safe double stacking
- Sanitary choice for strict drug manufacturing requirements
- Impervious to acids, fats, solvents and odors
- Resists water absorption & bacteria growth
- Inert to infestation, mold and mildew
- Consistently dimensionally accurate
- Exempt from ISPM 15 shipping regulations

**Nelson**<sup>TM</sup>

The Nelson Company

(443) 649-5294

[plastic@NelsonCompany.com](mailto:plastic@NelsonCompany.com)

[www.NelsonCompany.com](http://www.NelsonCompany.com)

[www.NelsonTechCenter.com](http://www.NelsonTechCenter.com)