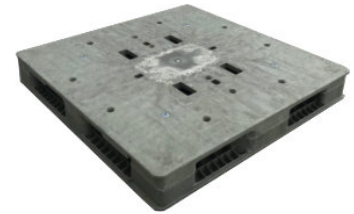


UP-1111-RV-140mm60lbs

43x43 (Square)

Plastic Reversible Container Pallet



Technical Data

Dimensions 43.3x43.3x5.5 inches (1100x1100x140 mm)
Weight 60.0 lbs

Load Capacities*

Static 10000 lbs
Dynamic 2500 lbs
Racking ST Req

Entry 4-way
Pallets per Stack 16
Truckload Qty 480

*Not all used pallet load capacities are available and some may have changed since originally purchased. Specific unit load Sample Tests (ST) are recommended to insure successful use with specific applications and equipment. We reserve the right to change any stated information without prior notice. Not responsible for typographical errors.

Handling Data

| | | |
|-------------------------|--|-----------------------------------|
| Nestable No | Reusability One-Way & Multi-Trip | ISPM-15 Exempt Yes |
| Stackable Yes | Destination Captive & Export | Food Grade Yes, non-FDA |
| Rackable Yes | Airfreight No | Pharmaceutical Yes |

Materials and Colors

Condition
Used

Material HDPP/PE
Color Gray, Black, Brown

(High-Density Polypropylene/Polyethylene)

All used pallets have been inspected and cleaned. Pallets may have limited cosmetic damage, but all are structurally sound.

Deck Specs

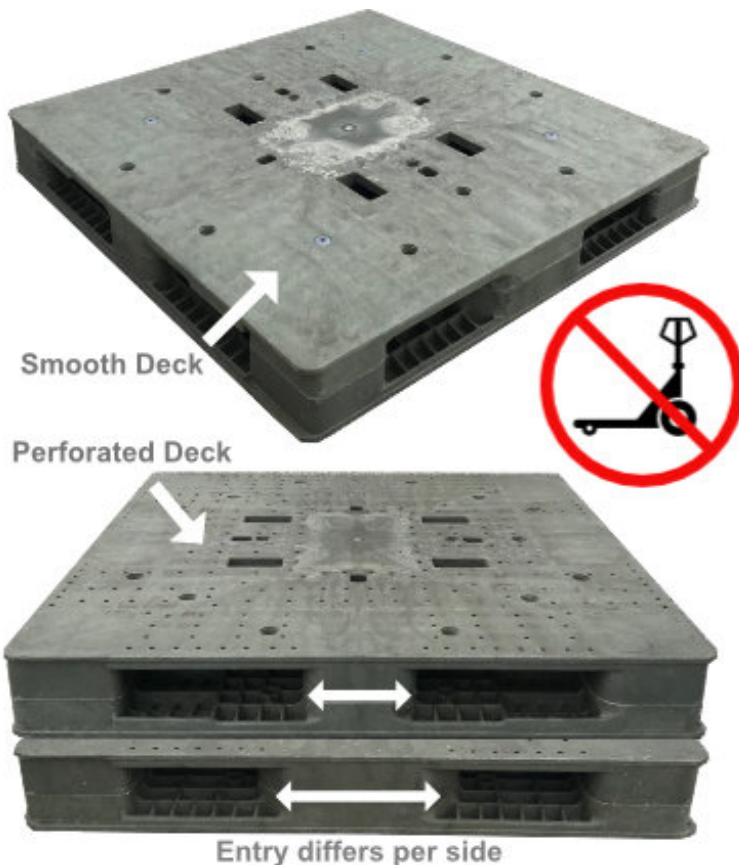
Top Deck
Closed

Bottom Deck
Reversible - Double-Sided

Features

Sturdy reversible pallet. Closed deck design features smooth surface on one side and perforated on other.

- Entry width varies by side
- Not suitable for pallet jack
- Allows for safe double stacking
- Cubes out shipping container to save costs
- Designed for Super Sack® and drum loads
- Easy-to-clean hygienic design
- Suitable for packaged food items
(not approved for direct food contact)
- Impervious to acids, fats, solvents and odors
- Resists water absorption & bacteria growth
- Inert to infestation, mold and mildew
- Consistently dimensionally accurate
- Exempt from ISPM 15 shipping regulations



Nelson™

The Nelson Company
(410) 477-3000 x110

plastic@NelsonCompany.com

www.NelsonCompany.com

www.NelsonTechCenter.com