

NPP-4545-FP-CP9

45x45 (Square) Plastic Chemical Pallet



Technical Data

Dimensions 44.9x44.9x5.9 inches (1140x1140x150 mm)
Weight 28.5 lbs

Load Capacities

Static 6200 lbs
Dynamic 3100 lbs
Racking --

Entry 4-way
Truckload Qty 416
Stack TL 16

TL (truckload) quantities are approximate and may vary by transport equipment or other factors.

Handling Data

Nestable No	Reusability Multi-Trip	ISPM-15 Exempt Yes
Stackable Yes	Destination Captive & Export	Food Grade Yes, non-FDA
Rackable No	Airfreight Yes	Pharmaceutical Yes



Materials and Colors

Condition
New

Material
HDPE/PP (Recycled)
HDPE/PP (Virgin*)

Color
Black
Gray/Custom*

(High-Density Polyethylene/Polypropylene)

*Custom colors and markings available in virgin material. (Minimum quantities required.)

Deck Specs

Top Deck
Open

Bottom Deck
6 Runner - Perimeter+2 Cross
(cruciform perimeter base)

Available Options:
12 grommets under deck

Features

For any industry moving boxes, bulk bags, containers, drums or octabins.

- Matches dimensions of CP9 chemical pallet w/ hooks on corners for securing stretch wrap
- One-piece design reduces weak points and the potential for cracks
- Wide angle runners allow for easy forklift entry, preventing bag tears and other damage
- Unique top deck reduces the need for slip sheets and dividers
- Allows for safe double stacking
- Easy-to-clean hygienic design
- Suitable for packaged food items (not approved for direct food contact)
- Sanitary choice for strict drug manufacturing requirements
- Impervious to acids, fats, solvents and odors
- Resists water absorption & bacteria growth
- Inert to infestation, mold and mildew
- Consistently dimensionally accurate
- Exempt from ISPM 15 shipping regulations

Nelson™

The Nelson Company
(443) 649-5294

plastic@NelsonCompany.com
www.NelsonCompany.com
www.NelsonTechCenter.com

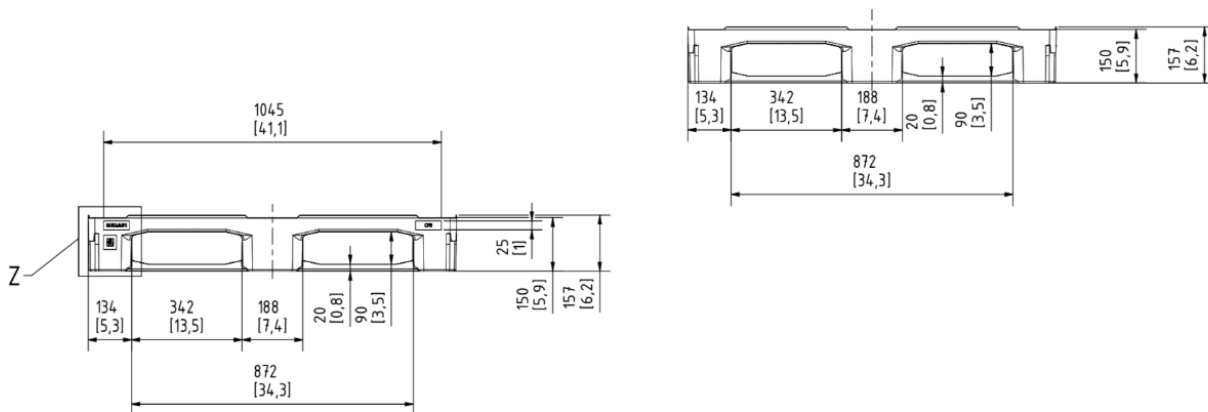
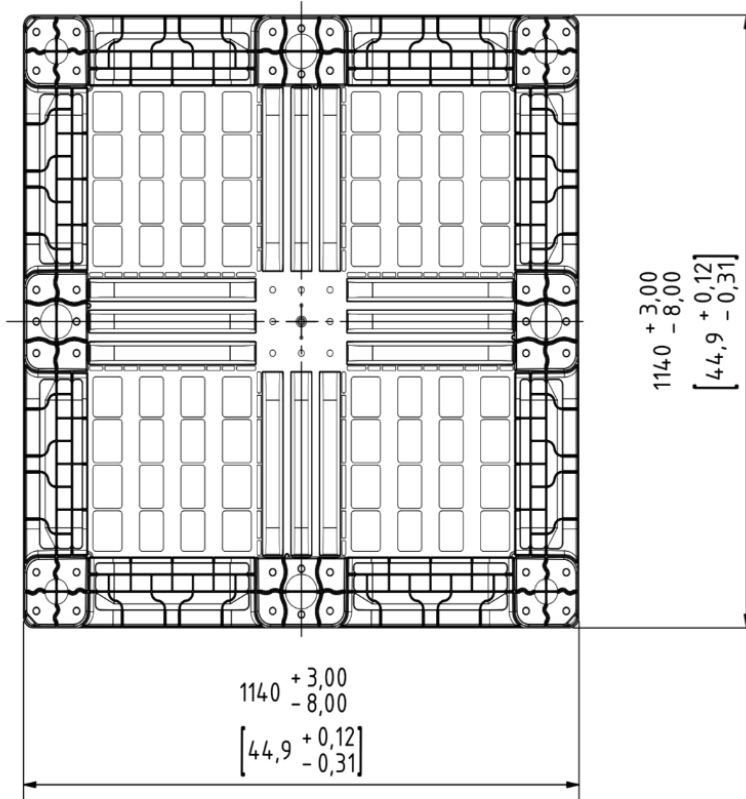
Spec Sheet Generated On: 6/9/2023
Specs subject to change without notice. Provided for informational purposes only. Technical data are guideline values and may vary based on intended use, features, raw materials and environment. Nothing shall be construed as warranties or guarantees, express or implied, regarding products or their use, application, performance or otherwise.

NPP-4545-FP-CP9

45x45 (Square)
Plastic Chemical Pallet



Technical Drawings



NelsonTM

The Nelson Company
(443) 649-5294

plastic@NelsonCompany.com

www.NelsonCompany.com

www.NelsonTechCenter.com

Tech Sheet Generated On: 6/9/2023
Specs subject to change without notice. Provided for informational purposes only. Technical data are guideline values and may vary based on intended use, features, raw materials and environment. Nothing shall be construed as warranties or guarantees, express or implied, regarding products or their use, application, performance or otherwise.