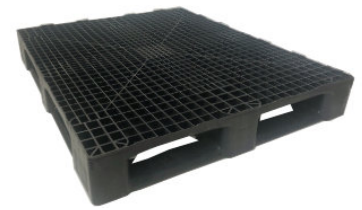


UP-1210-FP-160mm43lbs

48x40 (Standard) Plastic Industrial Pallet



Technical Data

Dimensions 47.2x39.4x6.3 inches (1200x1000x160 mm)
Weight 43 lbs

Load Capacities

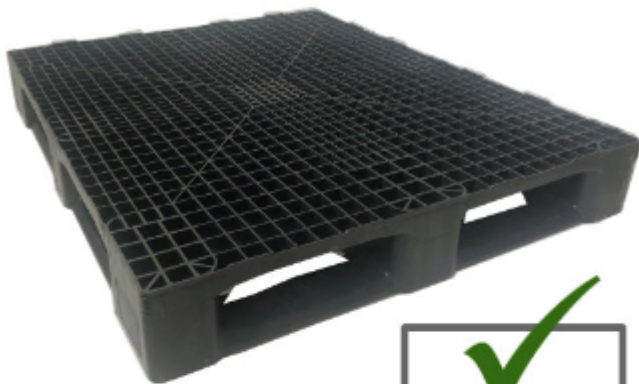
Static 16500 lbs
Dynamic 4950 lbs
Racking 2420 lbs

Entry 4-way
Truckload Qty 450
Stack TL / LTL -- / 15

Load capacities for used pallets may be unavailable or may have changed since issued. Unit load Sample Tests (ST) are recommended to confirm successful use with specific applications and equipment. TL (truckload) and LTL (less-than-truckload) quantities are approximate and may vary by transport equipment or other factors.

Handling Data

Nestable No	Reusability One-Way & Multi-Trip	ISPM-15 Exempt Yes
Stackable Yes	Destination Captive & Export	Food Grade Yes, non-FDA
Rackable Yes	Airfreight Yes	Pharmaceutical Yes



Materials and Colors

Condition
Used

Material
HDPE/PP

Color
Varies

(High-Density Polyethylene/Polypropylene)

Colors and manufacturers vary and orders may be mixed. To avoid return freight charges ask your Sales Rep about special requests. All used pallets have been inspected and cleaned. Pallets may have limited cosmetic damage, but all are structurally sound.

Deck Specs

Top Deck
Open

Bottom Deck
5 Runner - Perimeter+1 Long Side

Features

Mixed lot of mostly black. Raised rims around perimeter can be removed for a charge.

- One piece design for added durability
- Anti-impact perimeter
- 32° - 104° F temperature range
- Allows for safe double stacking
- Easy-to-clean hygienic design
- Suitable for packaged food items
(not approved for direct food contact)
- Impervious to acids, fats, solvents and odors
- Resists water absorption & bacteria growth
- Inert to infestation, mold and mildew
- Consistently dimensionally accurate
- Exempt from ISPM 15 shipping regulations

NelsonTM

The Nelson Company

(443) 649-5294

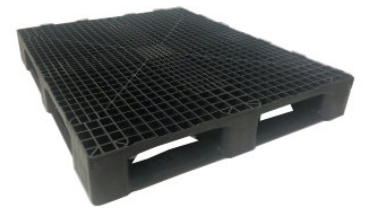
plastic@NelsonCompany.com

www.NelsonCompany.com

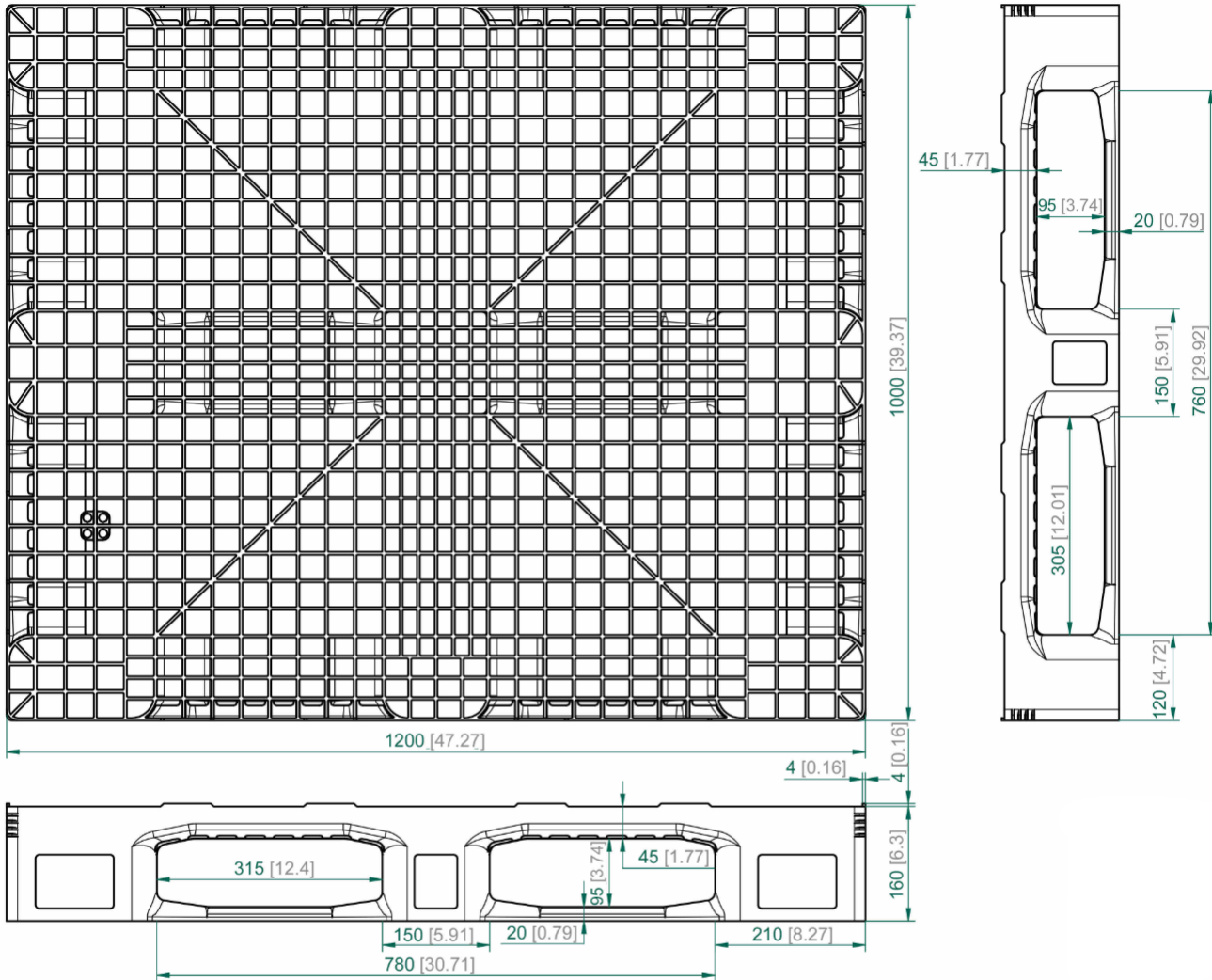
www.NelsonTechCenter.com

UP-1210-FP-160mm43lbs

48x40 (Standard)
Plastic Industrial Pallet



Technical Drawings



Nelson™

The Nelson Company

(443) 649-5294

plastic@NelsonCompany.com

www.NelsonCompany.com

www.NelsonTechCenter.com

Tech Sheet Generated On: 4/27/2024

Specs subject to change without notice. Provided for informational purposes only. Technical data are guideline values and may vary based on intended use, features, raw materials and environment. Nothing shall be construed as warranties or guarantees, express or implied, regarding products or their use, application, performance or otherwise.