

ORC-4840-FP-P3H5.1

48x40 (Standard) Plastic Industrial Pallet



Technical Data

Dimensions 48x40x5.1 inches
Weight 30.0 lbs

Load Capacities

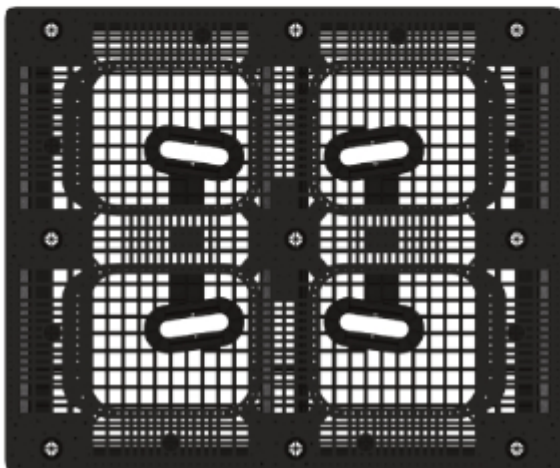
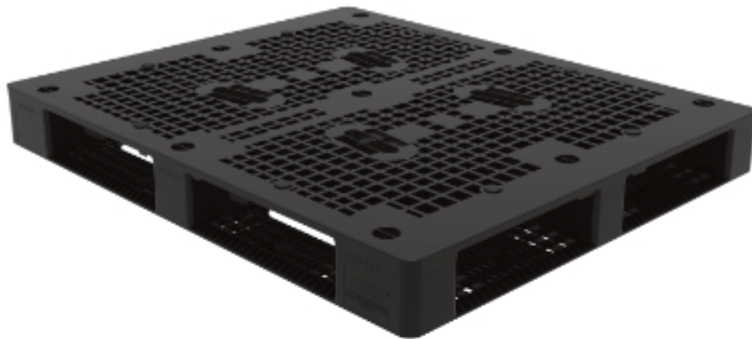
Static 30000 lbs
Dynamic 3000 lbs
Racking ST Req

Entry 4-way
Truckload Qty 600
Stack TL 20

Unit load Sample Tests (ST) are recommended to confirm successful use with specific applications and equipment. TL (truckload) quantities are approximate and may vary by transport equipment or other factors.

Handling Data

Nestable No	Reusability Multi-Trip	ISPM-15 Exempt Yes
Stackable Yes	Destination Captive & Export	Food Grade Yes, non-FDA
Rackable Yes	Airfreight Yes	Pharmaceutical Yes



Materials and Colors

Condition
New

Material HDPP (Recycled) HDPP (Virgin*)	Color Black Gray/Custom*
--	---------------------------------------

(High-Density Polypropylene)

*Custom colors and markings available in virgin material.
(Minimum quantities required.)

Deck Specs

Top Deck

Open

Options

Grommets

Bottom Deck

6 Runner - Perimeter+2 Cross
(cruciform perimeter base)

Features

Optional steel reinforcements in 40" direction allow for additional racking strength

- Low profile 5.1" height optimized for double stacking in racks
- Comfortable hand holds for easy manual handling
- Flow-through design reduces contaminant spaces
- Allows for safe double stacking
- Easy-to-clean hygienic design
- Suitable for packaged food items
(not approved for direct food contact)
- Impervious to acids, fats, solvents and odors
- Resists water absorption & bacteria growth
- Inert to infestation, mold and mildew
- Consistently dimensionally accurate
- Exempt from ISPM 15 shipping regulations

NelsonTM

The Nelson Company

(443) 649-5294

plastic@NelsonCompany.com

www.NelsonCompany.com

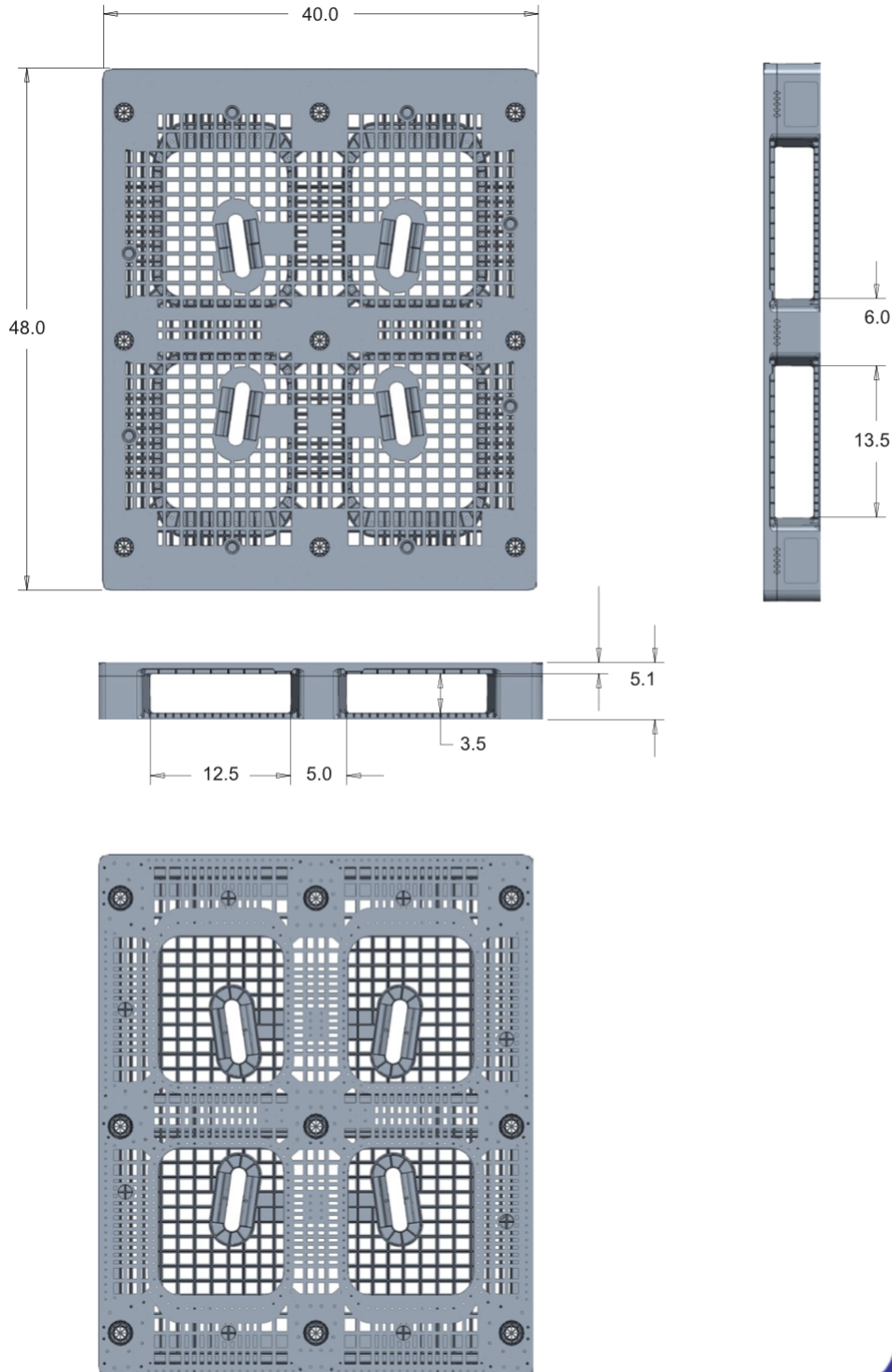
www.NelsonTechCenter.com

ORC-4840-FP-P3H5.1

48x40 (Standard)
Plastic Industrial Pallet



Technical Drawings



Nelson™

The Nelson Company

(443) 649-5294

plastic@NelsonCompany.com

www.NelsonCompany.com

www.NelsonTechCenter.com

Tech Sheet Generated On: 5/1/2025

Specs subject to change without notice. Provided for informational purposes only. Technical data are guideline values and may vary based on intended use, features, raw materials and environment. Nothing shall be construed as warranties or guarantees, express or implied, regarding products or their use, application, performance or otherwise.