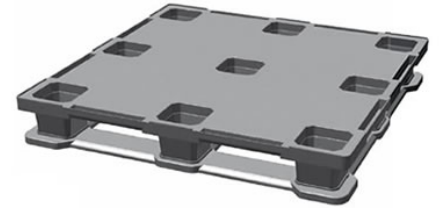


# CPP426-C/PE

## 44x44 (Square) Plastic Container Pallet



### Technical Data

Dimensions	44.1x44.1x6.4 inches (1120x1120x163 mm)
Weight	33.0 lbs
<b>Load Capacities</b>	
Static	17600 lbs
Dynamic	5300 lbs
Racking	1300 lbs
Entry	4-way
Pallets per Stack	17
Truckload Qty	476

Available in Truckload or LTL quantities. Minimum quantity required. We reserve the right to change any stated information without prior notice. Not responsible for typographical errors.

### Materials and Colors

**Condition**  
New

**Material**  
HDPE (Recycled)  
HDPE (Virgin\*)

**Color**  
Black  
Gray/Custom\*

\*Custom colors and markings available in virgin material. (Minimum quantities required.)

### Deck Specs

**Top Deck**  
Closed

**Bottom Deck**  
6 Runner - Perimeter+2 Cross  
(cruciform perimeter base)

**Available Options:**  
Open Top = CPP42#  
Closed Top = CPP42#-C

CPP420 - No skids (nestable)  
CPP426 - 6 Runner snap-on skids\*  
\*Order with skids off for lower shipping cost

### Features

- Allows for safe double stacking
- Cubes out shipping container to save costs
- Designed for Super Sack® and drum loads
- Easy-to-clean hygienic design
- Suitable for packaged food items  
(not approved for direct food contact)
- Impervious to acids, fats, solvents and odors
- Resists water absorption & bacteria growth
- Inert to infestation, mold and mildew
- Consistently dimensionally accurate
- Exempt from ISPM 15 shipping regulations

### Handling Data

<b>Nestable</b> No	<b>Reusability</b> One-Way & Multi-Trip	<b>ISPM-15 Exempt</b> Yes
<b>Stackable</b> Yes	<b>Destination</b> Captive & Export	<b>Food Grade</b> Yes, non-FDA
<b>Rackable</b> Yes	<b>Airfreight</b> Yes	<b>Pharmaceutical</b> Yes



**Nelson**™

The Nelson Company  
(410) 477-3000 x110

[plastic@NelsonCompany.com](mailto:plastic@NelsonCompany.com)

[www.NelsonCompany.com](http://www.NelsonCompany.com)

[www.NelsonTechCenter.com](http://www.NelsonTechCenter.com)